



The French Riviera

Learn French in Nice and discover the beauty of the Côte d'Azur while enjoying the fantastic Mediterranean climate and local cuisine! This stunning seaside city boasts a wealth of activities; from a diverse range of watersports, to cultural excursions, from city shopping to food markets in the colourful old town, from a leisurely stroll along the Promenade des Anglais to games on the pebbled beaches. Nice is the vibrant capital of the French Riviera, France's fifth largest city and has the largest number of museums after Paris, with the Modern Museum of Contemporary Art, Matisse Museum and the Marc Chagall Museum to name but a few. Bustling with activity, Nice offers French language students plenty of entertainment and fun, not to mention providing a great base to explore beautiful neighbouring places like Monaco, Cannes and Antibes. The city is also home to Europe's largest greenhouse, Parc Phoenix, a 7-hectare botanical garden that hosts 2,500 different plant species.

With weekly excursions and a generous choice of daily activities, there is a superb selection of sports, cultural and entertaining things to do and great sites to discover. With a unique holiday atmosphere, Nice will provide students with the ideal summer environment for an exciting French language learning experience by the sea!

Mayores informes e inscripciones:
 (55) 5401-5202
 a-aguirre@global-edu.com.mx



Key facts

Age group	13-17 years old
Teacher to student ratio	1:15
Activity leader to student ratio	1:12

French lessons

Lesson duration	45 minutes
Standard	20 lessons per week
Intensive	25 lessons per week
Private	5 lessons per week

Accommodation

Residence	Single rooms
Bathroom	Shared

Transfers

	<i>see page 54</i>
 Nice NCE*	free
 Nice SNCF	free

*Supervised tram transfer



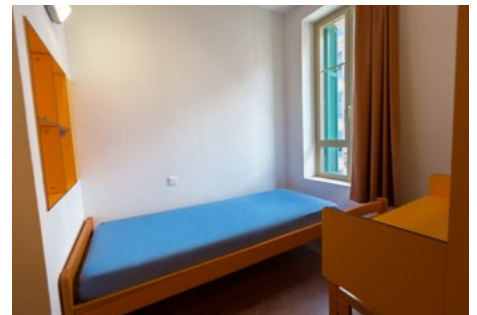
PREMIUM+

see page 13



Our course centre

The Massena course centre, built in 1795 and classed as a historical monument, features elegant architecture including courtyards, lush gardens and a clock tower. Located in the centre of town, less than 10 minutes on foot to the famous Promenade des Anglais and the beach, the campus features modern amenities with plenty of sports facilities and cultural landmarks nearby. Alpadia Nice boasts an indoor sportshall, a table tennis room, outdoor multi-sport courts and comfortable, bright classrooms, optimising the learning environment at this exceptional location.



Dates & fees in € / Euro

ARRIVAL & DEPARTURE DATES

27.06-03.07 / 04.07-10.07 / 11.07-17.07 / 18.07-24.07 / 25.07-31.07 / 01.08-07.08 / 08.08-14.08.2021

Arrival on Sunday - Departure on Saturday

INCLUDED IN THE PRICE

Full board accommodation, 24-hour supervision, welcome pack, tuition and course material, assessment test, language certificate, student card, pocket money service, included package of activities and excursions.

Enrolment fee 75

PACKAGE FEES	Standard	Intensive	Private
Lessons per week	20	25	+5
1 week*	895	935	195
2 weeks	1770	1860	Private lessons can only be combined with the Standard course.
3 weeks	2655	2790	
4 weeks	3540	3720	
Additional week	885	930	

OPTIONAL FEES			
PREMIUM +	Creative Arts	Tennis	Watersports
Price per week	110	150	150

* For stays of one week only, the Saturday and Sunday excursions are not available.

Sample weekly programme

	SUNDAY	MONDAY	TUESDAY	WEDNESDAY	THURSDAY	FRIDAY	SATURDAY
	Wake-up 7:00 / Breakfast 7:30						
8:30 - 12:30		Classes	Classes	Classes	Classes	Classes & weekly test	Free time
14:00 - 18:00	Excursion to Monaco Oceanographic Museum & sightseeing	Package activities	Package activities OR PREMIUM +	Beach games	Package activities OR PREMIUM +	Package activities OR PREMIUM +	Shopping & sightseeing excursion in Nice
	Dinner 18:30 - 19:30						
20:00 - 22:00	Ice breaker	BBQ	Movie night	Newspaper fashion show	Challenge night	Disco party	Dinner at the beach
	Lights out 22:30						

Times are approximate and may vary from week to week. Free time activities may include doing laundry, studying, contacting family, socialising etc. Please note that all schedules and activities are subject to change – in the event of force majeure, i.e. in case of bad weather conditions, insufficient number of participants or unavailability of the provider.