



# 2025 Cursos de Inglés en New York, Estados Unidos

[info@global-edu.com.mx](mailto:info@global-edu.com.mx)

# Aprende inglés con GLOBAL en New York



GLOBAL Nueva York se encuentra en un bonito e histórico edificio, diseñado por los mismos arquitectos que construyeron la icónica Grand Central Station. La escuela es el lugar perfecto para estudiar inglés, dentro del increíble distrito del bajo Manhattan y a escasos metros del One World Trade Center. Toma un curso de inglés en nuestra magnífica escuela en la más famosa ciudad del mundo.

Nuestra escuela de inglés cuenta con unas modernas instalaciones, así como luminosas y espaciosas aulas de estudio con magníficas vistas al Parque Battery y al río Hudson. Dispone de sala con computadoras, sala de reuniones, Wi-Fi gratis y sala para estudiantes donde pueden relajarse cuando no están estudiando para los exámenes. Tendrás muchas oportunidades para interactuar con estudiantes estadounidenses, así como estudiantes internacionales. GLOBAL Nueva York es el lugar perfecto para aprender inglés y ha sido elegida por estudiantes que estudian en MCNY, lo que significa que los estudiantes pueden transferirse a programas MCNY de licenciatura o posgrado sin justificar una puntuación de TOEFL, siempre y cuando hayan completado el curso avanzado de GLOBAL. El diseño acelerado de los cursos de MCNY permite que los estudiantes pueden completar un MBA en tan solo un año. Para asistir a GLOBAL Nueva York, debes tener por lo menos 16 años de edad.



# On Arrival

Moving to an unfamiliar country, embarking on a fresh course of studies and meeting a multitude of new faces can be a confusing even daunting experience for many newly arrived students. We gently guide you through the process by providing all the necessary information and support you'll require to make your stay with us happy and productive.

### What to expect on your first day

As soon as you step into a school, you'll experience a warm welcome. Our friendly administration team and academic staff work together to settle you in.

Your first day and orientation talk will include:

- Student ID card and handbook
- In-depth placement level test
- Personal interview with a member of our academic team
- Introduction to school policies, syllabus and timetables
- Information about our social programmes, accommodation options and local transport
- Advice on the practicalities of living in your host country
- Presentation/tour of the school and facilities
- Presentation or walk around the local area
- Your first lesson(s) for Intensive courses
- Student Q & A

In addition, in some schools, you may receive:

- Branded merchandise
- City and transport maps

### Example schedule

	Lessons 1 & 2* 09:00 – 10:40	Break 10:40 – 11:10	Lessons 3 & 4* 11:10 – 12:50	Lunch 12:50 – 13:40	Lessons 5 & 6* 13:40 – 15:45
MONDAY	General 20				
	Intensive 24				
	Intensive 30				
					Afternoon 10
TUESDAY	General 20				
	Intensive 24				
	Intensive 30				
					Afternoon 10
WEDNESDAY	General 20				
	Intensive 24				
	Intensive 30				
					Afternoon 10
THURSDAY	General 20				
	Intensive 24				
	Intensive 30				
					Afternoon 10
FRIDAY	General 20				
	Intensive 24				
	Intensive 30				
					Afternoon 10

\*During busy periods the General English classes may be run at different times of the day. Please check with individual schools when booking. An additional 5 minutes mini break is taken between 50 minute sessions.

# Student Progress

Throughout the programme, we monitor the academic development and well-being of each and every student carefully. We ensure that every student progresses as quickly as possible and achieves their full potential.

The level reached after studying depends on a variety of factors:

- Duration of the course – the longer the course, the better the results
- Number of lessons – a more intensive course helps you progress faster
- The language level of the student at entry

Active participation in afternoon social activities, making new friends from all over the world, immersing yourself in the local culture, as well as speaking the target language as much as possible, will greatly affect your achievements.

"When I arrived, I started in the Pre-Intermediate class. I have moved up three levels and I feel more confident in speaking – and my progress is not over yet!"

NICOLAS POILVERT, FRANCE



### Your level and what you can achieve

#### Advanced

You communicate very well using most structures accurately.

- IELTS 6.5+
- TOEFL iBT 110–120
- C1 & C2
- Cambridge English: C1 Advanced & C2 Proficiency
- Progress varies

Entry to postgraduate degree courses or work in your host country.

#### Upper Intermediate

You use a wide range of structures with a fair degree of accuracy.

- IELTS 5–6.5
- TOEFL iBT 87–109
- B2
- Cambridge English: B2 First
- 8–12 weeks study

Entry to university degree and diploma courses, internships, or paid work in your host country.

#### Intermediate

You have better control of grammar and vocabulary. Errors still frequent but good understanding of the language.

- IELTS 4–5
- TOEFL iBT 57–86
- B1
- 8–12 weeks study
- Cambridge English: B1 Preliminary

Entry to vocational or academic preparation courses.

#### Pre-Intermediate

You take part in conversations using basic grammar and vocabulary with acceptable accuracy.

- IELTS 3–4
- TOEFL iBT 9–56
- A2
- 8–12 weeks study
- Cambridge English: A2 Key

#### Elementary

You can communicate using very simple grammar and vocabulary.

- IELTS 2–3
- TOEFL iBT 0–8
- A1
- 4–6 weeks study

#### Beginner

You only know a few words and phrases.

- IELTS 1
- 4–6 weeks study

Subject to student numbers, and ensuring the learning outcomes of every student in the class, we may operate bridge classes where two levels are taught together.



# Language Learning System

We're passionate about language learning. That's why we're constantly reviewing the latest trends and methodology in the field.

Academic staff from every school participate in the research and development of our programmes. We ensure that the latest theories of language learning are considered and evaluated throughout our centres. That's why every one of our schools is a healthy environment for learning. The following points are fundamental to our language learning system:

### Language Immersion

We believe that the best way to learn a language is to study in the country where the language is spoken. We want you to immerse yourself in the culture and truly 'live the language'.

### Levels

Upon arrival at any the school, we'll give you a comprehensive language level test so we ensure you go straight into the right class for you. Levels have been closely matched to the Common European Framework, TOEFL iBT, IELTS and Cambridge English language assessment examinations. To move up to the next level you need to master our specific 'level objectives', which you can demonstrate by test scores and class participation.

We understand that some students learn faster than others, so our course is tailored for you as the individual. There are regular opportunities to discuss your progress with your teacher.

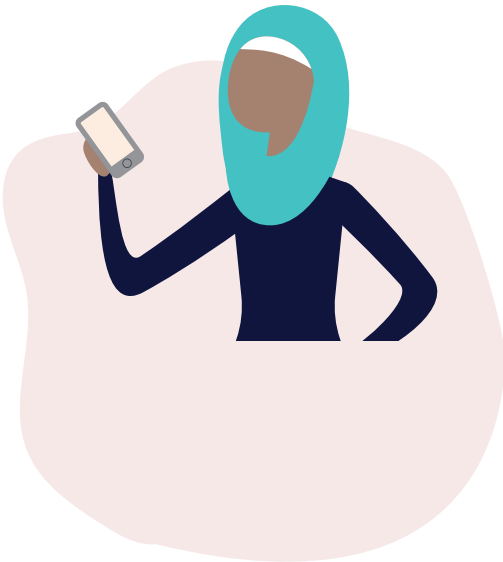
Through systematic testing, monitoring your class performance and constant teacher appraisal, the school academic director will track your progress and identify exactly when you have mastered the level objectives and are ready to move up to the next level. This monitoring and testing allows us to grade between and within levels, allowing you to spend more time studying with the students and materials at the level which is right for you.

### Latest Materials

We're constantly reviewing the latest materials available for language learning. We provide you with what our academic team have identified as being the very best materials currently available for your level. We are also committed to providing the latest technology, utilising the most cutting edge audio, video and web based resources to bring modern, real world language into the classroom.

### Cultural Exchange

As you 'learn and live the language' you will gain a greater understanding of the country in which you are studying. And as our students come from all over the world, our centres are not just places to learn languages, but are also places to meet and share experiences with people from a huge range of backgrounds and cultures.



### Quality Teachers

We understand that our students' single most identifiable measure of programme quality is the teacher. That's why at we only work with dedicated, highly motivated teachers, qualified with country specific teaching credentials.

As such we have a systematic programme of teacher development and performance evaluation. All of our students are regularly invited to provide feedback so that we can ensure that your teacher meets your expectations.



## (E-Learning)

Our custom built on line learning system works alongside our classes to help you maximise your time with us. Through your unique log in, you can access your test scores, prepare for and record your 1-2-1 tutorials with your teacher, and access a wealth of further learning resources to supplement and extend your in class learning.†

Your test results can also be analysed to provide unique learning objectives for you, giving you the chance to study exactly what you need in order to progress.

# Courses



† English programmes only



# General Courses

Our range of General Courses offers something for everyone – whether you’re looking for a short refresher course, or a longer, more intensive course, the programme to suit your needs.



## General 20

During the lessons you rapidly improve your communication skills in a variety of everyday situations. Classes cover grammar, vocabulary, pronunciation, speaking, listening, reading and writing. You use a text

book in conjunction with a wide variety of materials and exercises including role-plays, authentic materials, newspapers, magazines, YouTube and other internet content.

	General 20	Intensive 24	Intensive 25	Intensive 30	Afternoon 10	Evening Courses	Plus 5	Plus 10	One-to-One
Locations	All schools	UK, Auckland, Brisbane	US and Canada	All schools	All schools	Auckland	All schools	All schools	All schools
Lessons per week	20	24	25	30	10	Varies	5	10	Varies
Hours per week	16.67* (15 in Zurich)	20	20.83	25 (22.5 in Zurich)	8.33 (7.5 in Zurich)	Varies	3.75 (4.16 in US & Canada)	7.5 (8.33 in US & Canada)	Varies
Minutes per lesson	50 (45 in Zurich)	50	50	50 (45 in Zurich)	50 (45 in Zurich)	Varies	45 (50 in US & Canada)	45 (50 in US & Canada)	45 (50 in US & Canada)
Minimum level	All	All	All	All#	Intermediate	Varies	All	All	All
Maximum class size	16†	16†	16	16†	16†	16†	1	1	1
Minimum length	1 week	1 week	1 week	1 week	1 week	1 week	1 week	1 week	1 week
Minimum age	16	16	16	16	16	18	16	16	Varies

\* In the US equates to 20 clock hrs/wk. A clock hour is defined as a 60-minute span of time, with no less than 50 minutes of actual class instruction  
† 12 in Zurich, 18 in Australia, 17 in Canada  
# In Zurich, from elementary level and upwards

## Intensive Courses

Offer 24, 25 or 30 lesson options per week on our Intensive courses. All our intensive courses consist of the General 20 course (4 lessons per day) and a range of electives to suit all levels, needs and interests (2 lessons per day).

Elective options are run twice a week on the Intensive 24 and 25, and every day on the Intensive 30 course. Please check the relevant school page to see which elective options are offered at that school. Some elective options run on specific dates. Contact schools for details.

Electives*
English/French/German for Fluency** / Academic Skills***
Business English
Legal English
Medical English
TEF
DELFI
CCIP
Goethe-Zertifikat
TOEFL
IELTS
Cambridge English (B2 First, C1 Advanced, C2 Proficiency, B2 Business Vantage)

\* In order to ensure all electives are available year round, subject to student numbers and ensuring the learning outcomes of every student in the class, courses may sometimes be combined.  
\*\* Available for A1-A2 levels  
\*\*\* Available for B1 + levels

## Fluency / Academic Skills

This is a 12 module, topic-based course in which students can rapidly improve their speaking, listening, reading and writing skills. Each week students focus on vocabulary and grammatical structures related to a specific topic and perform practice exercises related to the four skills. The classes are level based so students can move to higher levels as their skills improve. This means students who wish to study longer and consolidate and expand their knowledge of a particular area, can do so without repeating any material.

Motivating materials and imaginative, knowledgeable teachers ensure that students will find the course highly rewarding.

## Afternoon 10

For those who are short of time or may be working, Afternoon 10 gives you the perfect opportunity to brush up on your conversation skills, Business English or prepare for a range of examinations.

## Evening Courses

Evening courses have been designed to cater for students who, due to work or study commitments, are unable to enrol on one of our daytime courses. All evening courses offer structured language classes that cover grammar, vocabulary and pronunciation, as well as developing the four key skills (reading, writing, speaking and listening).

The focus and intensity of the evening courses varies depending on location. Contact our schools directly or visit our website for full course details and dates.

## Plus Courses – One-to-one

The combination of group and One-to-One learning is ideal when you want extra help with general skills or more specialised topics. Plus courses are 5 or 10 individual lessons. Our teachers work with you to develop your study plan. This course can supplement a General 20 or Intensive courses.

One-to-one is the fastest way to improve your language skills is through individual lessons. Individual lessons are ideal if you prefer a very personal focus on your own aims.





Exam Preparation

Students have a very high success rate in examinations. We will be delighted to help you decide which of the many examination courses we offer is right for you.



Well structured programmes and advice on exam strategies ensure that you are fully prepared when you take your exam. Please remember to check with us that the examination of your choice is available during your planned stay.

Overview of Examinations			KEY TO LEVEL: <span></span> Pre-Intermediate (A2) <span></span> Intermediate (B1) <span></span> Upper Intermediate (B2) <span></span> Advanced (C1/C2)		
Examination			Level	Examination Dates	Description
ENGLISH					
CAMBRIDGE ENGLISH	B2 First	First Certificate in English	<span></span> <span></span> <span></span>	Frequently throughout the year	Accepted and highly regarded around the world as proof of competence in English
	C1 Advanced	Certificate of Advanced English	<span></span> <span></span>	Frequently throughout the year	
	C2 Proficiency	Certificate of Proficiency in English	<span></span>	March, June, December	
	B2 Business Vantage	Business English Certificate	<span></span> <span></span> <span></span>	March, May, June, November, December	
	TKT	Teaching Knowledge Test	<span></span> <span></span> <span></span>	Contact schools for dates	Focuses on the core teaching knowledge needed to teach English
IELTS	International English Language Testing System	<span></span> <span></span> <span></span>	Frequently throughout the year	Requirement for enrolment at universities and colleges in the UK, Ireland, Australia and New Zealand	
TOEFL	Test of English as a Foreign Language	<span></span> <span></span> <span></span>	Frequently throughout the year	Requirement for admission to universities and colleges in the USA and Canada	
GMAT	Graduate Management Admission Test	<span></span> <span></span> <span></span>	Frequently throughout the year	Recognised by graduate programmes at Universities around the world	
SAT	Scholastic Assessment Test	<span></span> <span></span> <span></span>	Frequently throughout the year	Recognised by Universities around the world	
FRENCH					
DELFSpan>	Diplôme d’Etudes en Langue Français 1er Degré	<span></span> <span></span> <span></span>	May, October	Recognised by the French Ministry of Education	
TEFSpan>	Test d’Evaluation de Français	<span></span> <span></span> <span></span>	Frequently throughout the year x	Recognised by French speaking universities and companies	
CCIPSpan>	Diplôme de Français Professionnel (DFP)	<span></span> <span></span> <span></span>	June, December	Recognised by the French Ministry of Education	
GERMAN					
ZDSpan>	Goethe-Zertifikat B1	<span></span> <span></span> <span></span>	April, June, August, November	Universally accepted as proof of intermediate proficiency in German	
GZSpan>	Goethe-Zertifikat B2	<span></span> <span></span>	April, June, August, November	Set as an official entrance requirement by many universities and colleges	

\*In order to ensure these options are available year round, courses may sometimes be combined.  
\*Subject to student numbers and ensuring the learning outcomes of every student in the class, Cambridge 30 lessons per week programmes may be combined with Intensive English programme and/or electives.

Cambridge English Language Assessment#

- B2 First, C1 Advanced, C2 Proficiency, B2 Business Vantage and TKT preparation courses available
- 20/24/30 lessons per week
- Lesson: 50 minutes
- 4–12 week programmes
- Minimum age 16+
- Pre-Intermediate level and above
- Locations – see individual language centres.

The course focuses on:

- Accurate use of everyday grammar and language structures
- General reading, writing and listening skills
- Extensive development and practice of vocabulary
- Improving the comprehension and communicative ability

Plus, the exam skills needed to obtain a high Cambridge English Language Assessment grade. We offer the Cambridge TKT exam at some centres where we run the English for Teaching course.

IELTS & TOEFL iBT Courses\*

- 24/25/30 lessons per week
- Lesson: 50 minutes
- 1–24 week programmes
- Minimum age 16+
- Intermediate level and above
- Locations - see individual language centre.

Up to 20 lessons per week which concentrate on grammar input and language skills and 10 lessons per week which focus on study skills and exam practice. In this course you will study:

- Accuracy with grammatical structures
- Communicative skills and ability
- Functional structures
- Vocabulary extension
- Active study skills
- Exam skills needed to obtain a high IELTS or TOEFL iBT score.

Mini Group Exam Preparation

- 20, 30 or 40 lessons per week
- 4-12 week programmes
- Participants: Maximum 5
- IELTS/TOEFL//Cambridge English (A2 Key, B1 Preliminary, B2 First, C1 Advanced, C2 Proficiency)
- 1 lesson: 45 minutes (50 minutes USA & Canada)

100% exam focused preparation working intensively on the grammar, vocabulary, reading, writing, listening and speaking skills necessary for the exam of your choice. This complete focus on your exam, taught in a small group, provides a fast route to success in the chosen exam.

GMAT & SAT preparation (USA)

With GMAT & SAT preparation options, you'll work with a qualified and experienced instructor who will focus exclusively on your needs ensuring you achieve a higher score in a shorter time.

Option 1: For Individuals

General 20 (English lessons) Plus 5 or Plus 10 (minimum 3 wks)  
or  
One-to-One 5, 10, 20 or 30 lessons p/wk

Option 2: Closed Groups

- Afternoon option on Intensive 30 course (minimum 3 wks)
- Intermediate to Advanced levels
- Minimum class size: 10
- Option to sit exam at a local test centre upon completion of course (exam fees charged separately)

All programmes include: tuition, GMAT/ SAT course materials, online GMAT/SAT practice tests and other resources, and MBA admissions guide.

Please note that a minimum of 4 weeks is required between booking and the course start date.



“Very good individual education plans are devised in discussion with students and shared with academic staff to enable effective support.”

CURRENT EDUCATION INSPECTION REPORT



# Experiences

Our ‘Experiences’ courses combine language tuition with a range of exciting activities. These courses offer amazing experiences and new friendships that you’ll never forget.



### Club 40+

We welcome young-at-heart mature students on all our courses throughout the year. In addition, at certain locations we organise social activities which suit the more mature student’s interests.

- General 20 in mixed age classes
- Afternoon activities: 3 p/wk
- Course duration: 1–4 wks (in Auckland 1–2 wks)
- Minimum age: 40
- Elementary to Advanced levels depending on school

Example activities include: winery visits, rain forest excursions, Maori weaving, boat trips, theatre visits, Kensington Palace.

### Language centres

All schools in the UK, USA (New York only), Canada, Auckland and Zurich. For starting dates please consult the relevant school page in the Prices Brochure.

### Academic Trips

Language immersion programmes develop your language skills in and around the cities where our schools are based. In addition to the in-school programme, Teachers regularly take their classes out on academic and cultural excursions to local points of interest around the city, immersing the class in the local environment and culture. These field trips ensure the application of the language skills and topics being covered that week in the class. They give students the opportunity to practice their new communication skills in and around the city while discovering its history, and its way of life.

Students will visit: popular tourist attractions, as well as hidden gems of the city that most tourists wouldn’t get to see; major museums and exhibitions; and civic projects that promote Sustainable Development Goals (SDGs).

The number of field trips varies per centre. Please contact us.

### Combined Courses

All courses combine language tuition with themed activities. Contact specific schools for details about the courses.

### French with History of Art

Learn all about the history of art in one of the world’s greatest and most interesting cities. Combine your French classes with art workshops and excursions to some of the world’s top museums.

- French tuition: 20 lessons p/wk (16.67 hours p/wk)
- 2 afternoon activities p/wk: art workshops and excursions (6 hours p/wk)
- Course duration: 2 wks
- Minimum Language Level: Intermediate

### Language centres

Paris

### English with Barista Training

Combine your English classes with barista training and gain the knowledge and practical skills needed to find work in the popular coffee shop sector. To apply for barista jobs you must be eligible to work while you study.

- English tuition: 20 lessons per week\*
- Recognised certificates of barista training issued at end of the course
- Barista training: 15 hours over 2 weeks in Auckland; 3 or 5 hours taken over 1 day in Brisbane
- Course duration: 2 weeks in Auckland; minimum 1 week General English + 1 training day in Brisbane
- Minimum language level: intermediate
- Minimum age: 17

### Language centres

Auckland and Brisbane

\* 24 lesson option for student visa holders

### French with Cooking

Learn the art of French cooking in Paris. This course will provide an insight to French culture and culinary traditions and enhance your cooking skills.

- French tuition: 20 lessons p/wk (16.67 hours p/wk)
- 3 afternoon cooking lessons p/wk (6 hrs/wk)
- Course duration: 2 wks
- Minimum Language Level: Pre-intermediate

### Language centre

Paris

“I’d recommend NY to anybody looking for new experiences no matter how old they are. Because at my age (41), a lot of people don’t want to try anything new...but I had a great time here! ”

ANJA CZER WINSKI, GERMANY

# Social Programme

All our schools offer a fun and varied social programme that allows you to make the most of your time abroad while practising your language skills in a natural environment and making new friends from around the world.



### Social Programme

Whatever your interests or lifestyle, we will find an appropriate and enjoyable activity for you. Day trips, museum and gallery visits, theatre and cinema outings, restaurants and pubs, international events and sports fixtures are all regular features of our programme. Many activities are free and many others are offered at discounted prices. In addition, arrangements can be made in all locations for most sporting activities – just ask our staff.



### Leisure and Language Programmes

Indulge your passion for sports with one of Leisure and Language Programmes. We offer many combinations including surfing in San Diego, forest hiking in Vancouver, tennis in Toronto, or extreme sports in Auckland. Please contact us for more details about these and other programmes.





# Accommodation

All language centres offer a choice of accommodation including homestays with our carefully selected hosts, college residential accommodation or hotels.



## Homestays

Our carefully selected homestays offer friendly, comfortable surroundings in which you can experience what life is really like in your host country. Many of our students stay in touch with their hosts for years afterwards.

## Residence Hotels

More economical than hotels, residence hotels offer a more limited service. Weekly maid service is provided, and some residence hotels have kitchen facilities.

## Student Residences / Hostels

Single and twin study bedrooms are available in student halls of residence where you can meet students from all around the world. This option includes private or shared bathroom facilities depending on the location, season and residence option. Rooms are cleaned regularly and bed linen is changed once a week. Catering arrangements differ, but most locations offer breakfast.

## Hotels

We are happy to advise you on many different types of hotel close to our schools and make bookings at the hotel of your choice.

## Self-Catering Apartment/ Flatshare in London

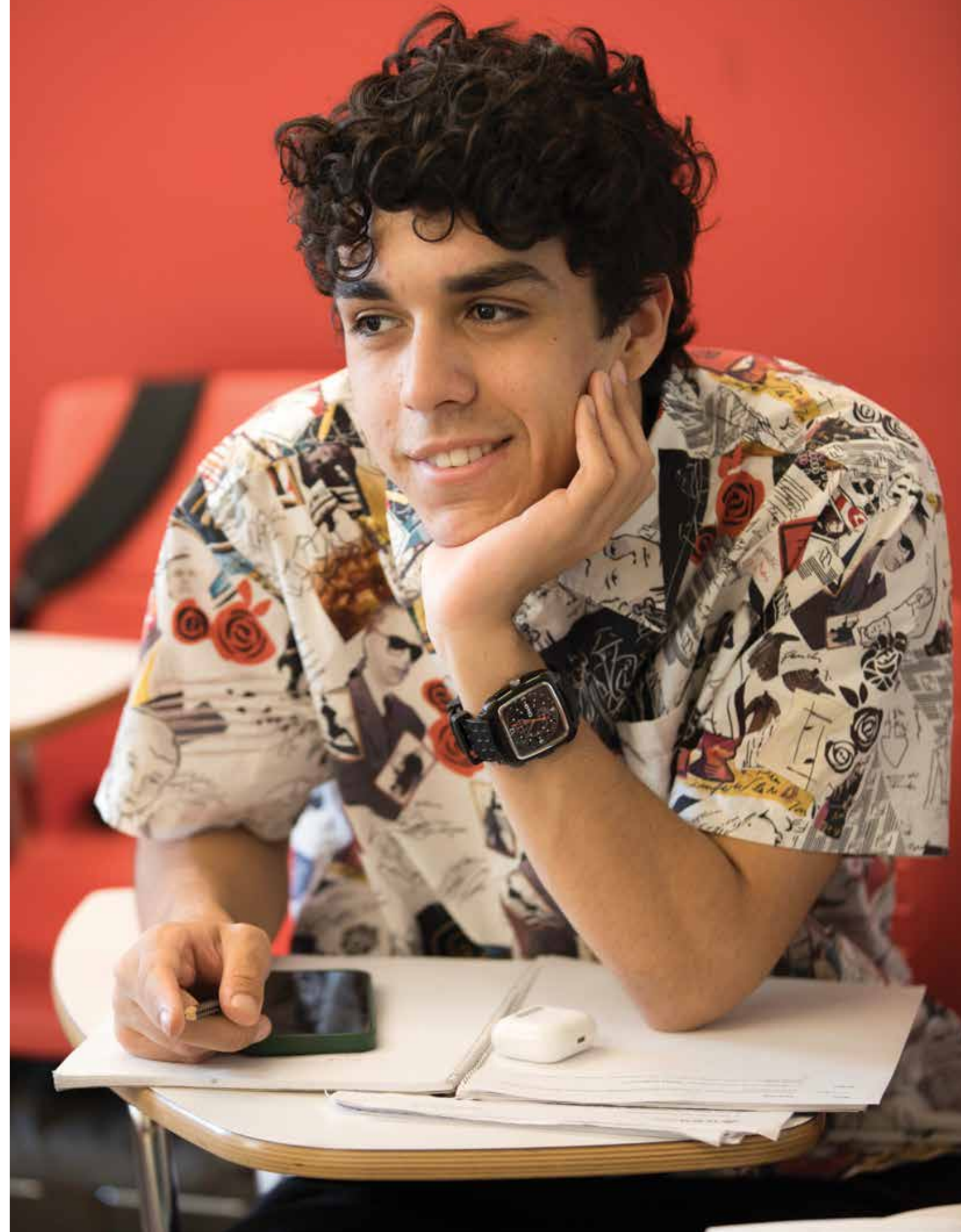
Apartments are located across London and accommodate between 4 and 6 people. Single, double and twin rooms are available. Apartments offer all essential facilities to the independent student.



"I don't have words to describe and thank my hosts. They're awesome, friendly, kind fellows, and all the good adjectives that could exist. I had a great time with them, and I'll miss them a lot. It was not what I was expecting from an American family, and I just loved it."

CECILIA MORALES LEIVA DALEFFE, BRAZIL

# Prices & Dates





# New York (\$US)

[info@global-edu.com.mx](mailto:info@global-edu.com.mx)

## General/Academic/English for Specific Purposes

	ACADEMIC TERM ABROAD	ACADEMIC YEAR ABROAD	
No. of weeks. Prices p/wk	1-3	4-11	12-23
Afternoon 10 <sup>^</sup>	270	240	
General 20	500	480	420
Business English 20	500	480	460
TOEFL 20	500	480	
Intensive 25	575	545	480
Intensive 30	625	595	515
Academic English 30			565
Business English 30 <sup>&gt;</sup>	625	595	515
TOEFL 30/IELTS 30 <sup>&gt;</sup>	625	595	515
No. of weeks. Course Prices	8	9	12
Cambridge 30 Exam Preparation	5000	5355	6780
No. of weeks. Prices p/wk			1-4
English for Public Speaking & Presentations <sup>&gt;&gt;</sup> 10 lessons p/wk			625
Prices p/wk			
English for Teaching Closed groups only			595
English for Teaching G20 + 5 individuals			1000
English for Teaching G20 + 10 individuals			1500
SAT/GMAT Groups only			625
Personalised Programme Tailor-made courses available upon request. (e.g. fashion, social media etc.)			Contact LSI NY
One to One lesson price p/lesson			100
Plus Courses Supplement 5/10 lessons			500/1000

<sup>^</sup> Not available on a Student Visa.

<sup>></sup> Options also available as Intensive 25.

<sup>>></sup> This is a premium certificate course in a small group of 5 students. This course can be taken independently, or in addition to General 20.

## Premium Courses

<b>One-to-one</b>			
No of lessons p/wk:	20	30	40
Course price	2000	3000	4000
<b>Mini Group</b> (Business/General English/Exam Prep)			
No of lessons p/wk:		20	30
Course prices	1 wk	1150	1670
	2 wks	1125	1645
	3 wks	1120	1605
	4+ wks	1110	1565

## Club 40+ Experience

No. of weeks. Prices p/wk	1-4
<b>3 activities supplement</b>	420

Please note that these activities are supplementary and exclusively for students aged 40+. This programme needs to be booked in addition to the G20 (mixed-age classes of 16+).

## Additional Costs

### OTHER FEES

<b>Registration fee</b>	<b>185</b>
Courier fee	95
Health insurance p/wk	40
Health insurance (65+) p/wk	75
<b>Airport transfer</b> one way	<b>175</b>
Airport transfer U18 supplement	55

## Accommodation

Placement fee		150
<b>HOMESTAY</b> (Prices per person p/wk)	B&B	HB
Single room, Manhattan	585	
Twin room, Manhattan*	540	
Single room, Outside Manhattan	420	480
Twin Room, Outside Manhattan*	375	430

### Other Supplements (Per person p/wk)

Special diets B&B/HB	25/50
U18 supplement	20
Summer (Jun 16 - Aug 25)	40
Christmas Supplement (Dec 21 - Jan 4 2026)	60
Executive room private bathroom (en-suite or sole use)	185

## RESIDENCE (Per person p/wk, 3 weeks maximum)

### YMCA Residence\*, West Side

Single, semi-private washroom	see prices on accommodation brochure
Single room, shared bathroom	see prices on accommodation brochure
Twin room, shared bathroom*	see prices on accommodation brochure

\*Includes access to sports and fitness facilities. No meals are included.

Please note that accommodation prices are subject to changes throughout the year. It is important to contact NY to confirm the prices at the time of your exchange programme.

\* For students booking together with the same arrival and departure dates.

## Additional Course Information

Class size: Max 16 students.

Lesson duration: 50 min (50 min for Premium Courses).

Minimum age: 16 years old.

### General Courses, Business English 30

Start dates for all levels: Every Monday.

Start dates for Beginner level: Every Monday.

### Business English 20

Minimum Level: B1

Start dates: 1st monday of each month.

### TOEFL 20

Minimum Level: B1

Start dates: Jan 6 - 8 weeks, Apr 7 - 8 weeks, Jun 30 - 8 weeks, Sep 29 - 8 weeks.

### Academic Term Abroad (ATA)/Academic Year Abroad (AYA)

Start dates: Jan 6, Apr 7, Sep 21.

### Academic English/TOEFL 30 & IELTS 30

Start date: Every Monday. Recommended start dates: Jan 6, Apr 7, Jun 30, Sep 29.

Exams are provided by third parties. For exam prices & test-centre locations, please contact NY.

### Cambridge English Exam Preparation

Start dates: B2: Jan 6 - 8 wks; Sep 22 - 12 wks

C1: Jan 6 - 9 wks; sep 22 - 12 wks

Please be advised that classes will only be conducted if there are a minimum of 5 students.

Exam dates: B2 First: March 1, Dec 13

C1 Advanced: March 8, Dec 13

The exam dates are paper-based or computer based.

Please be aware that all dates are subject to change at short notice based on demand.

### English for Public Speaking & Presentations

Minimum Level: B1

English for Public Speaking & Presentations: Jan 6 - 4 weeks, Jun 30 - 4 weeks, Sep 21 - 4 weeks

Please note that students can join the lessons every Monday.

### SAT/GMAT, English for Teaching

Start dates: contact NY.

### Premium Courses

Start dates for One-to-one: Every Monday.

Start dates for Mini-group: 1st monday of the month.

### Club 40+ Experience

Start dates: Mar 3 - 4 weeks; May 5 - 4 weeks; Sep 2 - 4 weeks; Nov 3 - 4 weeks.

Students can join the programme every Monday within the 4-week course period.

†Start date due to public holiday.

### Public Holidays

No instruction on the following dates: Jan 1-3, Jan 20, Feb 17, Apr 18, 21, May 26, Jun 19, Jul 4, Sep 1, Oct 13, Nov 11, Nov 27-28.

Christmas & New Year: School is closed from Dec 22 2025 to Jan 2 2026 inclusive.

2026: School reopens on Jan 5.

To obtain further information, please contact the school directly.

**Mayores informes e inscripciones:**

**56 3333-3045 y 55 5401-5202**

[info@global-edu.com.mx](mailto:info@global-edu.com.mx)

