



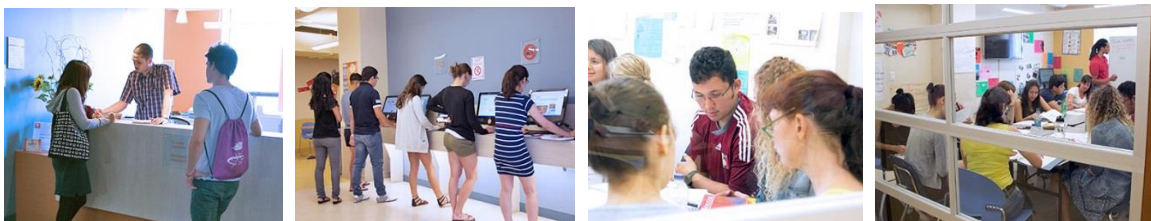
## Escuela de Francés en Montreal

*Descubre tu “alegría de vivir”*



Disfruta de una mezcla única de encanto antiguo europeo y una cultura urbana viva en Montreal, la ciudad de habla francesa más grande del mundo fuera de París. Esta metrópolis de 3.8 millones de habitantes ofrece cultura las 24 horas del día, tanto en inglés como en francés. Si te apasionan las artes, el cine y la gastronomía, te enamorarás de la ciudad tan pronto como llegues. Descubre la arquitectura del viejo mundo y el estilo moderno de la ciudad con elegantes distritos donde ir de comprar y parques verdes exuberantes. El carácter único de la ciudad fue moldeado por los franceses, los ingleses e inmigrantes de más de 80 países, lo cual ha creado una mezcla cautivadora de cultura y diversidad.

Nuestro campus en Montreal se encuentra en el corazón del Viejo Montreal, cerca del Viejo Puerto, del transporte público, de los parques, zonas comerciales y demás.



- El campus es del tamaño de una escuela boutique, con un ambiente familiar; conocerás todo nuestro personal y muchos estudiantes.
- Ofrecemos una variedad de actividades bilingües. Si estas aprendiendo inglés, francés o ambos idiomas, ¡hay un curso para ti!
- Los cursos y programas únicos en nuestro campus bilingüe, incluyen francés o inglés en Montreal, inglés a través de la comida y francés a través de la moda y el diseño ¡y muchos aspectos más!
- Somos el único centro en Quebec acreditado por la Universidad de Cambridge para hacer el CELTA.
- Si quieres enseñar francés, nuestro Programa CEFLE (Certificado de Enseñanza del Francés Langue Etrangere Seconde Ou) te preparará para una carrera de enseñanza de francés.

## Hospedajes



## En Un Hogar Anfitrión Seleccionado

¿Estás buscando un hogar lejos de tu hogar? Siéntete bienvenido/a a uno de los hogares anfitriones y experimenta un ambiente vivo y de apoyo. Es una excelente oportunidad para poner en práctica el francés que estás aprendiendo el francés y experimentar la cultura y vida familiar canadienses.

Los hogares anfitriones en Montreal:

- Se encuentran a 40-60 minutos de distancia de la escuela.
- Te proporcionan una habitación limpia, cómoda y privada equipada con un escritorio, una cama, un armario, y buena iluminación.
- Son culturalmente diversas y reflejan la población multicultural de Montreal.
- Son seguras, fiables, inspeccionadas y aprobadas por nuestro Departamento de Alojamiento.
- Pueden proporcionar comidas saludables para estudiantes que elijan las opciones de Pensión Completa o Media Pensión de Estancia en la Casa, o una cocina en la que puedes preparar tus alimentos.
- Son seguras, confiables y han sido inspeccionadas y aprobadas por el personal de hospedaje de la escuela.

### Elige entre 3 opciones de Hogar Anfitrión

PENSIÓN COMPLETA	MEDIA PENSIÓN	SIN ALIMENTOS
<ul style="list-style-type: none"><li>• Desayuno</li><li>• Almuerzo</li><li>• Cena</li><li>• Snacks</li></ul>	<ul style="list-style-type: none"><li>• Desayuno</li><li>• Cena</li><li>• Aperitivos de tarde</li></ul>	<ul style="list-style-type: none"><li>• Acceso a la cocina para prepararte tu propia comida.</li></ul>

## Estudio Apartamentos en Montreal

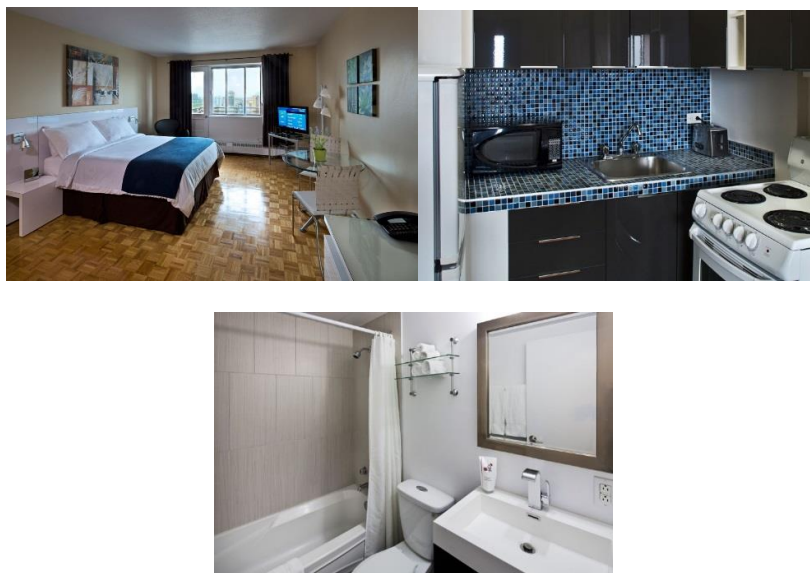
¿Te sientes aventurero? ¿Quieres experimentar Vancouver con otros estudiantes?  
Podemos ofrecerte opciones de alojamiento compatibles a tus posibilidades económicas y gustos.



Los apartamentos estudiantiles en Montreal te ofrecen alojamiento ideal para los estudiantes que deseen vivir en el corazón del barrio universitario y muy cerca de las universidades de McGill, Concordia y UQAM.

Con cocina completamente equipada y cuarto de baño, acceso a Internet de alta velocidad, elegante y moderno mobiliario, así como todas las comodidades necesarias para una estancia agradable y memorable, nuestros estudios amueblados, suites junior y apartamentos con 1, 2 o 3 recámaras, son ideales para viajeros que deseen alojamiento espacioso y de calidad y mejor valor precio centro de la ciudad.

Consúltanos sobre los servicios incluidos e instalaciones de 3463 Sainte Famille y las instalaciones en av. 1400 des Pins Oeste. Dos edificios de apartamentos situados en el corazón del distrito financiero. También puedes elegir entre vivir en Sainte-Famille 3463, esquina con la calle, de Milton, o en la ladera sur del Monte Royal en 1400 Avenida des Pins Oeste. Ambos lugares situados en el corazón de Montreal.



# CANADA

VANCOUVER | TORONTO | MONTRÉAL

VANCOUVER **V** | TORONTO **T** | MONTRÉAL **M**

## 2019 PRICELIST ACCOMMODATION

### ACCOMMODATION PLACEMENT FEE

**\$230** (non-refundable)

(Required for all accommodations options listed, and due in advance to confirm booking)

### ACCOMMODATION CHANGE FEE

**\$100**

### AIRPORT TRANSFER

**\$110** (one way)

**\$200** (two way)

### CUSTODIAL LETTERS FOR STUDENTS

**UNDER 18 YEARS** (if required)

**\$150** (non-refundable)

## HOMESTAY FEES

HOMESTAY OPTIONS	18 YEARS AND OLDER		UNDER 18 YEARS	
	LOW SEASON	HIGH SEASON <sup>1</sup>	LOW SEASON	HIGH SEASON <sup>1</sup>
<b>Homestay—Full board</b> (3 meals per day)	<b>\$245/week</b>	<b>\$270/week</b>	<b>\$260/week</b>	<b>\$285/week</b>
<b>Homestay—Half board</b> (2 meals per day—no lunch)	<b>\$230/week</b>	<b>\$255/week</b>	<b>\$245/week</b>	<b>\$270/week</b>
<b>Roomstay</b>	<b>\$175/week</b>	<b>\$200/week</b>	N/A	N/A
<b>Homestay &amp; Roomstay Extra Night*</b> (any meal plan & any age)	<b>\$40/night</b>			

*\*When the total extra night fees are greater than the weekly fee, you will be charged the lesser amount.*

## RESIDENCES<sup>2</sup>

	WEEKLY RENTAL	WEEKLY RATE 25 WEEKS OR MORE	SUMMER SUPPLEMENT PER WEEK
<b>VANCOUVER</b>			
<b>GEC VIVA TOWERS<sup>3</sup></b>			
Single Room	<b>\$400/week</b>	<b>\$380/week</b>	<b>\$100/week</b> (From June 22 - August 17)
Shared Room <sup>4</sup>	<b>\$320/week</b>	<b>\$300/week</b>	<b>\$50/week</b> (From June 22 - August 17)
<b>APT LIVING<sup>3</sup></b>			
Single Room	<b>\$400/week</b>	<b>\$380/week</b>	<b>\$100/week</b> (From June 22 - August 17)
<b>MAI LODGING<sup>3</sup></b>			
Single Roomstay	<b>\$300/week</b>	N/A	
<b>TORONTO</b>			
<b>CAMPUS ONE<sup>3</sup></b>			
Single Room (Meals included)	<b>\$550/week</b>	<b>\$525/week</b>	<b>Breakfast only</b> (from May 1st-August 26th)
<b>HARRINGTON HOUSING<sup>3</sup></b>			
Single Room	<b>\$280/week</b>	<b>\$260/week</b>	N/A
Single Premium (shared bathroom)	<b>\$350/week</b>	<b>\$330/week</b>	N/A
Single Premium (private bathroom)	<b>\$400/week</b>	<b>\$380/week</b>	N/A
<b>MONTRÉAL</b>			
<b>EVO VIEUX-MONTRÉAL<sup>5</sup></b>			
Single Room	<b>\$385/week</b>	<b>\$350/week</b>	<b>\$50/week</b>

<sup>1</sup> High season pricing applies from the night of Jun 22 to the night of Aug 17 inclusive, based on the dates of your stay.

<sup>2</sup> Rates are per person. Taxes included where applicable. Please confirm availability with Global upon registration. For full terms and conditions please consult us.

<sup>3</sup> Minimum age requirement is 19 at time of arrival. Rates based on single occupancy. Minimum stay is one week.

<sup>4</sup> Shared rooms can be booked by one student travelling alone, but they will share with another ILSC student.

<sup>5</sup> Minimum age requirement is 18 at time of arrival. Rates based on single occupancy. Minimum stay is one week.

# ENGLISH PROGRAMS

ENGLISH PROGRAMS & OFFERINGS	BEGINNER				INTERMEDIATE				ADVANCED		CAMPUS
	B1	B2	B3	B4	I1	I2	I3	I4	A1	A2	
<b>HIGHER EDUCATION PATHWAYS</b>											
Cambridge Mastery (Full-Time Intensive Schedule)							●	●	●	●	M
GMAT Preparation + ILSC Study*									●	●	
GRE Preparation + ILSC Study*									●	●	
IELTS Mastery					●	●	●	●	●	●	
IELTS Mastery 6.5									●	●	M
TOEFL Mastery						●	●	●	●	●	
University Pathway Program	●	●	●	●	●	●	●	●	●	●	M
<b>JUNIOR PROGRAMS</b>											
ESL High School Bridge Program	●	●	●	●	●	●	●	●	●	●	
Junior Camps	●	●	●	●	●	●	●	●	●	●	M
Family Camps	●	●	●	●	●	●	●	●	●	●	
<b>VOLUNTEER AND ENGLISH STUDY</b>											
Social Volunteer Internship Program					●	●	●	●	●	●	
Volunteer Internship Program (VIP)							●	●	●	●	
Volunteer Experience Program (VEP)						●	●	●	●	●	M
Ranchstay Program						●	●	●	●	●	
<b>BUSINESS ENGLISH MASTRIES</b>											
Business English Communication						●	●	●	●	●	M
Business English & Hospitality				●	●	●	●	●	●	●	
English for Business Management						●	●	●	●	●	
English for Hospitality Management Preparation						●	●	●	●	●	
International Business English						●	●	●	●	●	
Media & Marketing English						●	●	●	●	●	
<b>LANGUAGE EXCELLENCE MASTRIES</b>											
English through Global Social Responsibility							●	●	●	●	
English for Creative Arts					●	●	●	●	●	●	
<b>OTHER ENGLISH PROGRAMS &amp; OFFERINGS</b>											
Customized Group Packages	●	●	●	●	●	●	●	●	●	●	M
Executive Business English Certificates & Diploma**					●	●	●	●	●	●	
Executive Business English or French Tutoring	●	●	●	●	●	●	●	●	●	●	M
Hindi Certificate (Beginner or Intermediate)	●	●	●	●	●	●	●	●	●	●	
Leader in Training (LIT) Program	●	●	●	●	●	●	●	●	●	●	
Medical English Diploma or Certificates						●	●	●	●	●	
Private Tutoring in English, French, or Hindi***	●	●	●	●	●	●	●	●	●	●	M
TESL for Young Learners					●	●	●	●	●	●	

● Requires Pre-registration Online Language Assessment

\*Delivered by the Princeton Review \*\*\*French available in Montréal

# FRENCH COURSES & PROGRAMS

FRENCH CORE ELECTIVE COURSES	BEGINNER				INTERMEDIATE				ADVANCED		CAMPUS
	B1	B2	B3	B4	I1	I2	I3	I4	A1	A2	
French Communication / Communication	●	●	●	●	●	●	●	●	●	●	M
French through Montréal / Le français par Montréal						●	●	●	●	●	M
DEL F Preparation / Diplôme d'études en langue française					●	●	●	●	●	●	M
<b>FRENCH SKILLS ELECTIVES</b>											
Business Workplace Preparation / Affaires préparation au milieu de travail					●	●	●	●	●	●	M
Conversation / Conversation		●	●	●	●	●	●	●	●	●	M
Debating / Débats					●	●	●	●	●	●	M
French Around the World / Francophonie					●	●	●	●	●	●	M
French Business / Français des affaires internationales						●	●	●	●	●	M
French Communication	●	●	●	●	●	●	●	●	●	●	M
French for Photography / Le français par photographie					●	●	●	●	●	●	M
French through Drama / Le français par le théâtre				●	●	●	●	●	●	●	M
French through Fashion and Design / Le français par la mode et le design				●	●	●	●	●	●	●	M
French through Films & Songs / Le français par les films et chansons			●	●	●	●	●	●	●	●	M
Global Social Issues / Polémiques sociales					●	●	●	●	●	●	M
Grammar / Grammaire	●	●	●	●	●	●	●	●	●	●	M
International Current Events / Événements d'actualité					●	●	●	●	●	●	M
Journalism / Journalisme					●	●	●	●	●	●	M
Listening and Pronunciation / Écoute et prononciation		●	●	●	●	●	●	●	●	●	M
Media Studies / Études des médias					●	●	●	●	●	●	M
People & Places through Time/ Personnages et lieux dans le temps						●	●	●	●	●	M
Reading / Lecture		●	●	●	●	●	●	●	●	●	M
Society and Culture / Culture et société				●	●	●	●	●	●	●	M
Street Talk/ Le français familier					●	●	●	●	●	●	M
Writing / Écriture		●	●	●	●	●	●	●	●	●	M
Vocabulary / Vocabulaire		●	●	●	●	●	●	●	●	●	M
<b>FRENCH PROGRAMS &amp; OFFERINGS</b>											
<b>HIGHER EDUCATION PATHWAYS</b>											
TEF / TEFAQ Preparation—Evening Study					●	●	●	●	●	●	M
<b>JUNIOR PROGRAMS</b>											
Junior Camps	●	●	●	●	●	●	●	●	●	●	M
<b>VOLUNTEER AND FRENCH STUDY</b>											
Volunteer Experience Program						●	●	●	●	●	M
<b>OTHER FRENCH PROGRAMS &amp; OFFERINGS</b>											
Customized Group Packages	●	●	●	●	●	●	●	●	●	●	M
Executive Business French Tutoring	●	●	●	●	●	●	●	●	●	●	M
French Tutoring	●	●	●	●	●	●	●	●	●	●	M

**M** only the courses marked, are offered in MONTRÉAL

# CANADA

VANCOUVER | TORONTO | MONTRÉAL

## 2019 PRICELIST

Fees valid for registrations received between **Nov 1, 2018 and Oct 31, 2019**, for start dates after Jan 1, 2019.

The availability of programs is subject to student enrolment. All fees are in Canadian dollars.

### REGISTRATION FEE (LOW SEASON)

(Jan 2–Jun 23 & Aug 19–Dec 20<sup>1</sup>)

\$150 (non-refundable)

### REGISTRATION FEE–HIGH SEASON

(Jun 24–Aug 16<sup>1</sup>)

\$200 (non-refundable)

### REGISTRATION FEE–JUNIOR PROGRAMS

\$250 (non-refundable)

### TEXTBOOK & MATERIALS FEE

1–11 weeks	\$80
12–23 weeks	\$160
24+ weeks	\$240

Registration and materials fees apply to all core and specialty programs unless specified otherwise.

**IELTS Mastery 6.5 Dates: 16 week program** (I4 entry): Jan 2, Apr 22, Aug 12 **8 week program** (A1 entry): Feb 25, Jun 17, Oct 7

**FCE Start Dates:** Jan 2 (10 weeks), Jan 28 (6 weeks), Mar 25 (11 weeks), Apr 22 (7 weeks), Jun 17 (10 weeks), Jul 15 (6 weeks), Oct 7 (10 weeks), Nov 4 (6 weeks)

**CAE Start Dates:** Jan 2 (11 weeks), Jan 28 (7 weeks), Mar 25 (10 weeks), Apr 22 (6 weeks), Jun 17 (10 weeks), Jul 15 (6 weeks), Oct 7 (10 weeks), Nov 4 (6 weeks)

<sup>1</sup> Registration fee based on study start dates.

<sup>2</sup> For certain courses and programs you will need to take the PROLA test (Pre-registration Online Language Assessment) to determine that you meet the entry requirement for the course.

<sup>3</sup> French/Bilingual programs are only available in Montréal.

<sup>4</sup> Ranchstay is available all year round. However, there is less riding available between Nov–Feb due to snow. a) Bookings must be made at least 8 weeks prior to start date. b) If start date changes, additional fees will apply to amend flight booking.

<sup>5</sup> Length varies depending on progress and our pathway partners' requirements.

<sup>6</sup> Please refer to our Junior Camps Programs Pricelist and Application form.

<sup>7</sup> Toronto offering start dates in May - August only.

## TUITION FEES PER WEEK (1 LESSON=50 MINUTES)

VANCOUVER **V** | TORONTO **T** | MONTRÉAL **M**

	VANCOUVER/TORONTO			MONTRÉAL		
	1–11 weeks	12–23 weeks	24+ weeks	1–11 weeks	12–23 weeks	24+ weeks
<b>Full-Time Intensive FTI</b> (30 lessons/wk) Mon–Thu: 9:00 am–4:00 pm Fri: 9:00 am–12:00 pm	\$415	\$390	\$375	\$405	\$380	\$365
<b>Full-Time FT</b> (24 lessons/wk) Mon–Thu: 9:00 am–2:30 pm Fri: 9:00 am–12:00 pm	\$355	\$340	\$325	\$345	\$330	\$315
<b>Part-Time AM PT AM</b> (17 lessons/wk) Mon–Fri: 9:00 am–12:00 pm	\$270	\$270	\$270	\$260	\$260	\$260
<b>Part-Time PM PT PM</b> (13 lessons/wk) Mon–Thu: 1:00–4:00 pm	\$165	\$165	\$165	\$155	\$155	\$155

## SPECIALTY PROGRAMS /PACKAGES

	PROGRAM LENGTH	START DATES	COST
<b>Volunteer Experience (English, French or Bilingual<sup>3</sup>)</b> <b>V M T</b>	6–12 weeks study + 4–12 weeks volunteer experience	Every Monday except the last week of a session	<b>FT or FTI</b> tuition + service fee <b>\$825</b>
<b>Ranchstay</b> <b>V</b>	2–6 weeks study + 2–6 weeks on a ranch	Every Monday except the last week of a session <sup>4</sup>	(Full package—all fees included) 4 weeks <b>\$3,290</b> 6 weeks <b>\$4,280</b> 8 weeks <b>\$5,260</b> 10 weeks <b>\$6,170</b> 12 weeks <b>\$7,140</b>
<b>IELTS Mastery: 6.5</b> <b>V M T</b>	8 weeks or 16 weeks (depending on entry level)	See sidebar for start dates	<b>FTI</b> tuition + materials fee <b>\$100</b>
<b>FCE Cambridge Mastery</b> <b>V M T</b> <b>CAE Cambridge Mastery</b> <b>V M T</b>	6–11 weeks	See sidebar for start dates	<b>FTI</b> tuition + material and test fees <b>\$400</b> (non-refundable)
<b>Medical English Diploma/Certificates</b> <b>V</b>	<b>Diploma:</b> 12 weeks <b>Certificate:</b> 4 weeks	Session start dates	<b>FT</b> tuition
<b>University Pathway Program</b> <b>V M T</b>	Minimum 8 weeks of required academic courses <sup>5</sup>	Session start dates	<b>FTI</b> tuition
<b>30 and Beyond</b> <b>V</b>	Minimum 1 week	Every Monday except the last week of a session	<b>PT AM / FT / or FTI</b> tuition

## JUNIOR PROGRAMS<sup>6</sup>

<b>ESL-High School Bridge</b> <b>V T</b>	Any study length	Vancouver: Every Monday except the last week of a session Toronto: Every Monday from May 21 - September 6 except the last week of a session <sup>7</sup>	Junior Registration Fee <b>\$250 + FT or FTI</b> tuition
--	------------------	---	--

## TUTORING FEES

<b>Private Tutoring (English/French<sup>3</sup>)</b> <b>V M T</b>	5–30 hours/week	Available year-round upon request	General English/French—one person: <b>\$80/hour</b> <b>V T</b> <b>\$75/hour</b> <b>M</b> General English/French—two or more: <b>\$55/hour per person</b> <b>V T</b> <b>\$50/hour</b> <b>M</b> Specialty English/French—one person: <b>\$90/hour</b> <b>V T</b> <b>\$85/hour</b> <b>M</b> Specialty English/French—two or more: <b>\$70/hour per person</b> <b>V T</b> <b>\$65/hour per person</b> <b>M</b>
---	-----------------	-----------------------------------	---

## Actividades Extraescolares

Reúnete con amigos y explora Montreal con actividades extraescolares diarias. Las actividades cambian dependiendo de la época del año y pueden incluir montar bicicleta, patinaje en línea, piragüismo en el Río San Lorenzo, esquí, patinaje, noches en el cine, visitas a restaurantes locales y demás. Las actividades de tarde típicamente tienen tarifas mínimas y un profesor o coordinador de actividades será tu guía.



### *Actividades de fin de semana*

Sal de la ciudad, explora la increíble naturaleza y los vastos paisajes urbanos y rurales de Canadá. Hay interminables atracciones naturales y culturales que descubrir, por lo que cada fin de semana te traerá una nueva aventura. Puedes visitar la histórica ciudad de Quebec, una de las ciudades más antiguas de Norteamérica, o dirigirte a Toronto para ir de compras y hacer turismo, y ver las espectaculares Cataratas del Niágara.



### **Admira Montreal:**

[https://www.google.com.mx/search?q=montreal+canada&rlz=1C1EJFA\\_enMX698MX698&espv=2&biw=1366&bih=662&source=lnms&tbm=isch&sa=X&ved=0ahUKEwik8p-2htfRAhVV92MKHb5fBsYQ\\_AUIBigB](https://www.google.com.mx/search?q=montreal+canada&rlz=1C1EJFA_enMX698MX698&espv=2&biw=1366&bih=662&source=lnms&tbm=isch&sa=X&ved=0ahUKEwik8p-2htfRAhVV92MKHb5fBsYQ_AUIBigB)

### **Para mayores informes:**

**Tels. (55) 68 40 15 55  
(55) 5401-5202**

**Info@global-edu.com.mx**