

Descripción de la escuela



14 Aulas 🌬 Aire acondicionado 🖥 Sala de informática 🗨 Pizarra interactiva 🎓 Centro de aprendizaje 📖 Biblioteca
 📚 Sala de estudiantes 🌿 Terraza 📄 Máquinas expendedoras 📶 Wifi

Ubicación

415 Broadway
 San Diego, CA 92101
 Estados Unidos

Estación más cercana

Autobús: Broadway & 3rd Av

Horario de apertura

| | |
|-------------------------------------------------|-----------------------|
| Pzt. - Cum.: 8.00 - 17.00 | Escuela |
| Pzt. - Cum.: 8.00 - 17.00 | Recepción |
| Pzt. - Cum.: 8.00 - 17.00 | Biblioteca |
| Pzt. - Cum.: 8.00 - 17.00 | Centro de aprendizaje |
| Pzt.: 8.50 - 9.40, Çrs. + Cum.: Club de estudio | |
| 13:40 - 14:30 | |
| Pzt. - Cum.: 8.00 - 17.00 | Sala de ordenadores |

De un vistazo

- La escuela está situada justo en el animado Barrio Gaslamp
- Centro de enseñanza a medida con tecnología de vanguardia construido en 2015
- Centro oficial de exámenes de IELTS
- Acreditada por el CEA
- Terraza en la azotea
- Escuela con el SISTEMA DE ÉXITO DE EUROCENTRES
- Programa de eLearning myEurocentres antes, durante y después de tu estancia

Si quieres estudiar inglés en la Costa Oeste de Norteamérica viviendo el sueño californiano, te ofrecemos la mejor solución: San Diego. Esta ciudad es perfecta para practicar surf, tomar el sol y visitar lugares apasionantes. San Diego lo tiene todo para estudiar inglés. Encontrarás nuestra escuela de idiomas en el céntrico Gaslamp District, en una zona repleta de tiendas y restaurantes, y a tan solo unos minutos a pie de la playa. Eurocentres San Diego te enamorará con su azotea, sus espaciosas aulas repletas de luz natural y su decoración moderna. Te aseguramos que una de las mejores ciudades de California te recibirá con los brazos abiertos.

Nacionalidades

| | | |
|-------------------|---|-----|
| Europa Occidental | ■ | 25% |
| Europa del Este | ■ | 5% |
| Asia | ■ | 15% |
| América Latina | ■ | 25% |
| Medio Oriente | ■ | 28% |
| Varios | ■ | 2% |

Combinación de edades

| | | |
|----------------|---|-----|
| 16 a 18 años | ■ | 2% |
| 19 a 24 años | ■ | 66% |
| 25 a 30 años | ■ | 27% |
| Más de 30 años | ■ | 5% |

Edad mínima requerida: 16

Curso

Clases por semana

| | |
|--------------------------|--------------|
| Curso general de inglés | 20 / 25 / 30 |
| IELTS | 25 / 30 |
| Tiempo completo IELTS | 20 / 25 / 30 |
| Cambridge First (FCE) | 30 |
| Cambridge Advanced (CAE) | 30 |
| TOEFL | 25 |
| TOEIC | 25 |
| Inglés comercial | 25 |
| Año sabático | 20 / 25 / 30 |
| Lecciones individuales | |

Alojamiento

- Alojamiento en familia
- Residencia
- Apartamento compartido

Información local



Vistas de la ciudad

- Museo de Aviación Flying Leatherneck - ¿Fanático del vuelo?
- Legoland California - Construye recuerdos familiares
- Playa Mission Beach - Colorida plataforma
- Parque de Animales Salvajes - Safari en San Diego

Ciudad

"La mejor ciudad de los Estados Unidos" se está convirtiendo rápidamente en el principal destino de viajeros de todo el mundo. ¿Y por qué no? Con su clima casi perfecto durante todo el año, sus playas pintorescas, sus paisajes sensacionales y restaurantes de primera categoría e instalaciones culturales, San Diego es el lugar ideal para estudiantes internacionales que buscan vivir la cultura estadounidense en una ciudad segura y amena. Disneyland y las atracciones de Los Ángeles al norte y México al sur están a poco tiempo en coche.

Costes de vida (aprox.)

| | |
|-----------------------------------|----------|
| Viaje en bus: | 2.50 USD |
| Discotecas: | 12 USD |
| Refresco: | 1.50 USD |
| Café: | 3.50 USD |
| Cena: | 18 USD |
| Comida rápida: | 8 USD |
| Película: | 10 USD |
| Gastos de bolsillo aprox. / sem.: | 140 USD |

Población

3 000 000

Información acerca del transporte público

1 mes: USD 74 (aprox.)

Aeropuerto

San Diego International Airport

Estación de tren

Santa Fe

Conexiones del transporte público

<http://www.sdmts.com/Tripplanner.asp>

Enlaces relacionados

<http://www.sandiego.org>

Actividades

Cosas para hacer en la ciudad

(aprox.)

| | |
|----------------------|-------------------|
| Zoo de San Diego | USD 50-75 |
| Teatro al aire libre | Precio a petición |

Excursiones de un día

(aprox.)

| | |
|--------------|-------------------|
| Disneylandia | Precio a petición |
| Hollywood | Precio a petición |

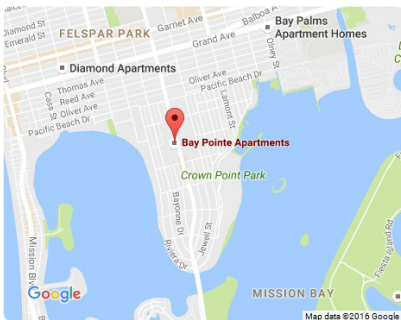
Excursiones de varios días

(aprox.)

| | |
|--------|-------------------|
| México | Precio a petición |
|--------|-------------------|

USA - San Diego / Shared Apartment

Bay Pointe Apartments



Location

Bay Pointe Apartments
 3866 Ingraham St, San Diego, CA, 92109
 Phone: +1 858 688 8792, +1 858 750 3425, +1 520 405 1516
 Email: econner@oxfordinternational.com

Distance to school

40 minutes by public transport

Nearest station

In front of complex
 2 minutes on foot

Located just a few minutes walk from the beaches of Mission Bay and Pacific Beach. For students who want to be close to the beach and the lively neighborhoods of Mission and Pacific Beach.

Booking information

Reservation all year ✓

Minimum age 18

Accommodation information

Everything you need you can find within walking distance including restaurants, bars, grocery stores, pharmacies and malls. Complex amenities include: basketball and tennis courts, Jacuzzis, BBQ area and much more. Free exercise classes, such as yoga and tennis are also offered on site.

Do women and men live on the same floor? ✓

Cooking facilities ✓
 Full Kitchen, microwave, dishwasher and all cooking utensils

Fridge ✓

Bedding available ✓
 Pillows, sheets, blankets provided

Towels available ✓
 1 towel per student

Room cleaning ✓
 Weekly cleanings

Laundry facilities ✓
 Coin operated laundry in building

Wifi/Internet ✓
 In apartment and at complex

Phone ✓
 Free local calls

TV ✓
 In living room- basic cable

Air conditioning ✓
 Unit in living room

Lift ✓

Desk ✓

Fitness facilities ✓
 Cardio and weight rooms, Sauna

Swimming pool ✓
 Large swimming pool

Car parking ✓
 Need permit/ approx. \$50 fee / not covered / outside in a lot

Non-smoking building ✓
 No smoking in complex

Safekeeping of valuables ✗

Personal door access key/card ✓
 Pool / gym keys, apartment keys are provided.

Night (security) staff ✓
 24 hours security

General comment
 Each apartment is fully furnished and consists of a living room, 2 bedrooms with two bathrooms, and a fully equipped kitchen. All apartments can house up to four students and have a patio/balcony.

Arrival information

After 2 PM, self check-in, lockbox on apartment door with key, welcome packet inside of apartment

USA - San Diego / Shared Apartment

Pinnacle on the Park



Booking information

| | |
|-----------------------------|----|
| Reservation all year | ✓ |
| Minimum age | 18 |

Accommodation information

The apartment is located within walking distance of restaurants, shopping, cafes, pubs and clubs and just a few minutes from the ballpark or The Gaslamp District. Interiors are comfortable, yet modern, with spacious balconies and expansive windows to maximize panoramic views. This 45-story high-rise features ground floor retail and commercial space, 24-hour concierge, onsite management and maintenance service. Furthermore the apartment complex offers a Jacuzzi, a BBQ area, a clubhouse with media/theater room, billiard/game room and many more.

| | |
|--------------------------------------------------------------|---|
| Do women and men live on the same floor? | ✓ |
| Cooking facilities | ✓ |
| Full Kitchen, microwave, dishwasher and all cooking utensils | |
| Fridge | ✓ |
| Bedding available | ✓ |
| Pillows, sheets, blankets provided | |
| Towels available | ✓ |
| 1 towel per student | |
| Room cleaning | ✓ |
| Weekly cleanings | |
| Laundry facilities | ✓ |
| In the apartment- free | |
| Wifi/Internet | ✓ |
| In apartment and at complex | |
| Phone | ✓ |
| Free local calls | |
| TV | ✓ |
| In living room- basic cable | |
| Air conditioning | ✓ |
| Central air | |

| | |
|-----------------------------------------------------------------|---|
| Lift | ✓ |
| Desk | ✓ |
| Fitness facilities | ✓ |
| Large modern gym | |
| Swimming pool | ✓ |
| Large swimming pool | |
| Car parking | ✓ |
| Need permit / underground covered parking—approx. \$25 per week | |
| Non-smoking building | ✓ |
| No smoking in complex | |
| Safekeeping of valuables | ✗ |
| Personal door access key/card | ✓ |
| Pool / gym FOBS, apartment keys are provided. | |
| Night (security) staff | ✓ |
| 24 hours security | |

General comment
Each apartment is fully furnished and consists of a living room, 2 bedrooms with two bathrooms, and a fully equipped kitchen. All apartments can house up to four students and have a patio/balcony.

Arrival information

After 4 PM, at front lobby desk, welcome packet inside of apartment

Location

Pinnacle on the Park
424 15TH STREET, San Diego, CA, 92101
Phone: (855) 522-8928; 1 (858) 688-8792 or 1(858) 750-3425(after Hours)
Email: econner@oxfordinternational.com

Distance to school

14 minutes by public transport
20 minutes on foot

Nearest station

2 blocks
4 minutes on foot

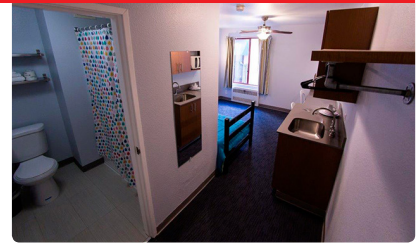
Located in the East village area of Downtown close to the new modern public library and easy access to the freeways.

USA - San Diego / Residence

Vantaggio Suites



Residence



Standard bedroom



Lounge area



Location

Vantaggio Suites
1736 State Street, San Diego, CA 92101
Phone: +1 6195950111
Email: econner@oxfordinternational.com

Distance to school

15 minutes on foot

Nearest station

America Plaza Trolley Station
20 minutes on foot

Booking information

| | |
|----------------------|----|
| Reservation all year | ✓ |
| Minimum age | 18 |

Accommodation information

Small / large single rooms as well as double rooms.

| | |
|------------------------------------------|---|
| Do women and men live on the same floor? | ✓ |
| Cooking facilities | ✓ |
| Fridge | ✓ |
| Bedding available | ✓ |
| Towels available | ✓ |
| Room cleaning | ✓ |
| Laundry facilities | ✓ |
| Coin operated facilities. | |
| Wifi/Internet | ✓ |
| Phone | ✓ |
| TV | ✓ |
| Approximately 33 channels. | |
| Air conditioning | ✗ |
| Lift | ✓ |
| Desk | ✓ |
| Fitness facilities | ✗ |
| Swimming pool | ✗ |
| Car parking | ✓ |
| approx. USD 125/ month, USD 45/ week | |
| Non-smoking building | ✓ |
| Safekeeping of valuables | ✓ |
| Personal door access key/card | ✓ |
| Night (security) staff | ✓ |
| General comment | |

Arrival information

IMPORTANT: Students MUST contact the school with their arrival details at least one week before arriving.

USA - San Diego /

Courses

| Course title | Intensity | Description | Lessons per week | Duration of lesson (in min.) | Duration in weeks | Min. age | Entry level | Average class size | Maximum class size | Course time |
|-------------------------|--------------------|-----------------------------------------------------------------------------------------------------------------------------------------------------------------------------------------------------------------------------------------------------------------------------------------------------------------------------------------------------------------------------------------------------------------------------------------------------------------------------------------------------------------------------------------------------------------------------------------------------------------------------------------------------------------------------------------------------------------------------|------------------|------------------------------|-------------------|----------|-------------|--------------------|--------------------|-----------------------------------------------------------------------------------------------------------------------------------------------------|
| General Language | 20 Basic | Each language course is based on the Basic (Core Program) Course of 20 morning lessons per week. The Basic Course develops all aspects of your language competence in a personalised program coordinated by your core teacher. Courses integrate grammatical structures and functions, guided conversations, pronunciation, speaking, listening, reading, writing, and vocabulary, in order to advance your communicative competency in all skill areas and to ensure a balance of fluency and accuracy. It includes 2-3 Study Club sessions per week plus 5 hours self-study in the Learning Centre. | 20 | 50 | 2-52 | 16 | 0-9 | 10 | 14 | (Mon) 09:40-14:30 (Tue-Fri) 08:50-12:40 |
| | 25 Intensive | Build on your Basic (Core Program) Course. The Specialised Intensive consists of the Basic Course and 5 specialised lessons per week, allowing you to develop the specific linguistic skills you require. The afternoon lessons in a Specialized Intensive are dedicated to the elective class of your choice. | 25 | 50 | 2-52 | 16 | 0-9 | 10 | 14 | (Mon) 09:40-14:30/ 14:40-15:30 or 15:40-16:30 (Tue-Fri) 08:50-12:40 (1 afternoon) 14:40-16:30 (2 afternoons) 13:40-14:30 |
| | 30 Super Intensive | This is our most intensive, personalised and comprehensive course. It is geared for the serious student of English who wants to maximise his or her study time with more in-class hours. This is the perfect course for students interested in acquiring the most comprehensive English skills at the fastest possible pace for language building purposes. The Specialised Super-Intensive Course consists of 20 core lessons per week plus two 5-lesson per week elective classes. | 30 | 50 | 2-52 | 16 | 0-9 | 10 | 14 | (Mon) 09:40-16:30 (Tue/Thurs) 08:50-16:30 (Wed/Fri) 08:50-14:30 |
| Business English | 25 Intensive | The Business English course combines the best in academic business knowledge with everyday business practice. A perfect blend of task-based learning and skill focus, the Elective also accommodates those interested in the TOEIC test, which is used to measure English in everyday work activities. Learn the all-important vocabulary and master the skills necessary to achieve a high score on all components of the TOEIC test (Reading & Listening/Writing & Speaking). Our instructors will guide you according to your priorities in a class which improves English for professional purposes. The Intensive Business Course consists of 20 core lessons per week plus 5 lessons per week of Business English. | 25 | 50 | 2-12 | 16 | 4-7 | 10 | 14 | (Mon) 09:40-14:30/ 14:40-15:30 or 15:40-16:30 (Tue-Fri) 08:50-12:40 (1 afternoon) 14:40-16:30 (2 afternoons) 13:40-14:30 |

USA - San Diego /

Courses

| Course title | Intensity | Description | Lessons per week | Duration of lesson (in min.) | Duration in weeks | Min. age | Entry level | Average class size | Maximum class size | Course time |
|--------------|--------------------|---------------------------------------------------------------------------------------------------------------------------------------------------------------------------------------------------------------------------------------------------------------------------------------------------------------------------------------------------------------------------------------------------------------------------------------------------------------------------------------------------------------------------------------------------------------------------------------------------------------------------------------------------------------------------------------------------------------------------------------------------------------------------------------------------------------------------------------------------------------------------------------------------------------------|------------------|------------------------------|-------------------|----------|-------------|--------------------|--------------------|-----------------------------------------------------------------------------------------------------------------------------------------------------|
| TOEFL | 25 Intensive | <p>Students preparing to take the TOEFL iBT will find the TOEFL elective option well-designed to help them achieve the score they need. Through regular assessment and test practice, this course will also develop the knowledge students need to build their confidence and be fully prepared for all parts of the test. Students can also get feedback and advice from our Exams Coordinator. They will learn the skills which are needed as well as familiarize themselves with exam techniques and strategies.</p> <p>The TOEFL 25 Intensive includes: -20 lessons per week of general English materials (morning classes) - 5 lessons per week of the Exam Skills elective, in which students use authentic materials drawn from the most commonly-taken standardized English-language tests to learn skills and strategies to prepare for the exam or test of their choice</p> | 25 | 50 | 2-52 | 16 | 5 | 10 | 14 | (Mon) 09:40-14:30/ 14:40-15:30 or 15:40-16:30 (Tue-Fri) 08:50-12:40 (1 afternoon) 14:40-16:30 (2 afternoons) 13:40-14:30 |
| TOEIC | 25 Intensive | <p>The TOEIC Intensive course allows students to choose the best course to prepare them for the TOEIC test. Students can take 20 morning lessons and combine it with 5 lessons per week in an afternoon Exam Skills preparation elective class.</p> <p>The TOEIC 25 Intensive includes: -20 lessons per week of general English materials (morning classes) - 5 lessons per week of the Exam Skills elective, in which students use authentic materials drawn from the most commonly-taken standardized English-language tests to learn skills and strategies to prepare for the exam or test of their choice</p> | 25 | 50 | 2-52 | 16 | 4 | 10 | 14 | (Mon) 09:40-14:30/ 14:40-15:30 or 15:40-16:30 (Tue-Fri) 08:50-12:40 (1 afternoon) 14:40-16:30 (2 afternoons) 13:40-14:30 |
| FCE | 30 Super Intensive | <p>30 lessons per week, including 20 morning lessons of general language improvement, 5 afternoon lessons of training in exam technique, and a further 5 afternoon lessons of guided exam practice. In the morning programme you will improve your English communication skills and grammar towards a B2 level of proficiency, and in the afternoon programme you will learn exam question techniques to maximise your result in each part of the Cambridge First exam: Speaking, Listening, Reading and Use of English, and Writing. During the 5 lessons per week of guided exam practice you will complete mock examination questions and related practice tasks at your own pace with teacher support.</p> | 30 | 50 | 8-12 | 16 | 5 | 10 | 14 | (Mon) 09:40-16:30 (Tue/Thurs) 08:50-16:30 (Wed/Fri) 08:50-14:30 |

USA - San Diego /

Courses

| Course title | Intensity | Description | Lessons per week | Duration of lesson (in min.) | Duration in weeks | Min. age | Entry level | Average class size | Maximum class size | Course time |
|--------------|--------------------|---------------------------------------------------------------------------------------------------------------------------------------------------------------------------------------------------------------------------------------------------------------------------------------------------------------------------------------------------------------------------------------------------------------------------------------------------------------------------------------------------------------------------------------------------------------------------------------------------------------------------------------------------------------------------------------------|------------------|------------------------------|-------------------|----------|-------------|--------------------|--------------------|-----------------------------------------------------------------------------------------------------------------------------------------------------|
| CAE | 30 Super Intensive | 30 lessons per week, including 20 morning lessons of general language improvement, 5 afternoon lessons of training in exam technique, and a further 5 afternoon lessons of guided exam practice. In the morning programme you will improve your English communication skills and grammar towards a C1 level of proficiency, and in the afternoon programme you will learn exam question techniques to maximise your result in each part of the CAE exam: Speaking, Listening, Reading and Use of English, and Writing. During the 5 lessons per week of guided exam practice you will complete mock examination questions and related practice tasks at your own pace with teacher support. | 30 | 50 | 8-12 | 16 | 7 | 10 | 14 | (Mon) 09:40-16:30 (Tue/Thurs) 08:50-16:30 (Wed/Fri) 08:50-14:30 |
| IELTS | 25 Intensive | Our Intensive IELTS preparation course will build on the Basic morning core program through our Exams Skills afternoon elective to help students familiarize themselves further with the IELTS test. Students can also get feedback and advice from our Exams Coordinator. The IELTS 25 Intensive includes: -20 lessons per week of general English materials (morning classes) - 5 lessons per week of the Exam Skills elective, in which students use authentic materials drawn from the most commonly-taken standardized English-language tests to learn skills and strategies to prepare for the exam or test of their choice | 25 | 50 | 1-52 | 16 | 4 | 10 | 14 | (Mon) 09:40-14:30/ 14:40-15:30 or 15:40-16:30 (Tue-Fri) 08:50-12:40 (1 afternoon) 14:40-16:30 (2 afternoons) 13:40-14:30 |
| | 30 Super Intensive | 30 lessons per week, including 20 morning lessons of general language improvement, 5 afternoon lessons of training in exam technique, and a further 5 afternoon lessons of guided exam practice. In the morning programme you will improve your general English communication skills and grammar, and in the afternoon programme you will learn exam question techniques to maximise your result in each part of the IELTS exam: Speaking, Listening, Reading, and Writing. During the 5 lessons per week of guided exam practice you will complete mock examination questions and related practice tasks at your own pace with teacher support. | 30 | 50 | 1-52 | 16 | 4 | 10 | 14 | (Mon) 09:40-16:30 (Tue/Thurs) 08:50-16:30 (Wed/Fri) 08:50-14:30 |

USA - San Diego /

Courses

| Course title | Intensity | Description | Lessons per week | Duration of lesson (in min.) | Duration in weeks | Min. age | Entry level | Average class size | Maximum class size | Course time |
|-----------------|--------------------|---------------------------------------------------------------------------------------------------------------------------------------------------------------------------------------------------------------------------------------------------------------------------------------------------------------------------------------------------------------------------------------------------------------------------------------------------------------------------------------------------------------------------------------------------------------------------------------------------------------------------------------------------------------------------------|------------------|------------------------------|-------------------|----------|-------------|--------------------|--------------------|-----------------------------------------------------------------------------------------------------------------------------------------------------|
| Full-time IELTS | 20 Basic | <p>Our IELTS preparation course will help students develop key skills tested in the IELTS test. Students will be prepared for the test through a combination of language skills training and test practice. Each week is based on a relevant topic area, allowing students to build up experience of a range of topics covered in the test. Our knowledgeable staff will help you become familiar with the structure of the test as well as teach you the necessary skills, vocabulary, and grammar to succeed. Students can also get feedback and advice from our Exams Coordinator.</p> <p>IELTS 20 includes: - 20 core lessons per week of IELTS-specific materials.</p> | 20 | 50 | 1-24 | 16 | 5 | 10 | 14 | (Mon) 09:40-14:30 (Tue-Fri) 08:50-12:40 |
| | 25 Intensive | <p>Our Intensive IELTS preparation course will build on the Basic morning core program through our Exams Skills afternoon elective to help students familiarize themselves further with the IELTS test. Students can also get feedback and advice from our Exams Coordinator.</p> <p>IELTS Full-time 25 includes: - 20 lessons per week of IELTS-specific materials (morning classes) - 5 lessons per week of the Exam Skills elective, in which students use authentic materials drawn from the most commonly-taken standardized English-language tests to learn skills and strategies to prepare for the exam or test of their choice</p> | 25 | 50 | 1-24 | 16 | 5 | 10 | 14 | (Mon) 09:40-14:30/ 14:40-15:30 or 15:40-16:30 (Tue-Fri) 08:50-12:40 (1 afternoon) 14:40-16:30 (2 afternoons) 13:40-14:30 |
| | 30 Super Intensive | <p>30 lessons per week, including 20 morning lessons of language improvement related to IELTS exam questions and topics, 5 afternoon lessons of training in IELTS exam technique, and a further 5 afternoon lessons of guided exam practice. During the taught programme you will learn exam question techniques to maximise your result in each part of the IELTS exam: Speaking, Listening, Reading, and Writing. During the 5 lessons per week of guided exam practice you will complete mock examination questions and related practice tasks at your own pace with teacher support.</p> | 30 | 50 | 1-24 | 16 | 5 | 10 | 14 | (Mon) 09:40-16:30 (Tue/Thurs) 08:50-16:30 (Wed/Fri) 08:50-14:30 |

USA - San Diego /

Courses

| Course title | Intensity | Description | Lessons per week | Duration of lesson (in min.) | Duration in weeks | Min. age | Entry level | Average class size | Maximum class size | Course time |
|-------------------------------|--------------------|----------------------------------------------------------------------------------------------------------------------------------------------------------------------------------------------------------------------------------------------------------------------------------------------------------------------------------------------------------|------------------|------------------------------|-------------------|----------|-------------|--------------------|--------------------|-------------|
| Language Semester/Year | 20 Basic | For bookings of 24 weeks or more: students may choose and combine schools (all Eurocentres school destinations), languages, and course content. School may be changed every 12 weeks if the student wishes, and course content (General Language, IELTS preparation) as available, if student level is appropriate, and in consultation with the school. | 20 | 50 | 24-48 | 16 | 0-9 | 10 | 14 | variable |
| | 25 Intensive | | 25 | 50 | 24-48 | 16 | 0-9 | 10 | 14 | variable |
| | 30 Super Intensive | | 30 | 50 | 24-48 | 16 | 0-9 | 10 | 14 | variable |
| Private Lessons | One-to-one | Ideal for combing class-based instruction with private lessons in a comprehensive program that focuses on your individual needs. | 5-40 | 50 | 1-52 | 16 | 0-9 | | | variable |

USA - San Diego /

Dates and Fees

(PRICES IN USD)

COURSES & EXAMS

| |
|--------------------------------------------------------------------------------|
| 20 Basic General Language, IELTS |
| 25 Intensive Business, FT* IELTS, General Language, IELTS, TOEFL, TOEIC |
| 30 Super Intensive CAE, FCE, FT* IELTS, General Language, IELTS |
| * FT = Full-time IELTS |

TUITION

| LESSONS PER WEEK | 20 | 25 | 30 |
|-------------------------------------|--------|--------|--------|
| 1 week | 343 | 414 | 482 |
| 2 weeks | 686 | 828 | 964 |
| 3 weeks | 1,029 | 1,242 | 1,446 |
| 4 weeks | 1,248 | 1,504 | 1,760 |
| 5 weeks | 1,560 | 1,880 | 2,200 |
| 6 weeks | 1,872 | 2,256 | 2,640 |
| 7 weeks | 2,184 | 2,632 | 3,080 |
| 8 weeks | 2,448 | 2,976 | 3,456 |
| 9 weeks | 2,754 | 3,348 | 3,888 |
| 10 weeks | 3,060 | 3,720 | 4,320 |
| 11 weeks | 3,366 | 4,092 | 4,752 |
| 12 weeks | 3,564 | 4,332 | 5,136 |
| Add. week | 297 | 361 | 428 |
| 24 weeks | 6,792 | 8,304 | 9,864 |
| 36 weeks | 9,792 | 12,240 | 14,508 |
| 48 weeks | 13,056 | 16,320 | 19,344 |
| 24-48 weeks: Language Semester/Year | | | |

ACCOMMODATION

| | per person & per week / night |
|--------------------------------------------------------------|-------------------------------|
| Homestay | 280 / 41 |
| single room, shared bathroom, half board | |
| Homestay | 225 / 33 |
| double room, shared bathroom, half board | |
| Vantaggio Suites* | 440 / 87 |
| single room, private bathroom, no meals | |
| Vantaggio Suites* | 460 / 90 |
| large single room, private bathroom, no meals | |
| Vantaggio Suites* | 270 / 50 |
| double room, private bathroom, no meals | |
| Pinnacle on the Park Apartments** | 540 / -- |
| single room, private bathroom, no meals | |
| Pinnacle on the Park Apartments** | 291 / -- |
| double room, private bathroom, no meals | |
| Bay Pointe Apartments** | 474 / -- |
| single room, private bathroom, no meals | |
| Bay Pointe Apartments** | 255 / -- |
| double room, private bathroom, no meals | |
| * min. age 18, special monthly prices: single room | |
| USD 1,185 / large single room USD 1,248 / | |
| double room USD 709, | |
| approx. USD 500 refundable deposit on-site | |
| ** min. age 18, approx. USD 150 refundable deposit by | |
| Credit Card on-site, Cancellation: 2 weeks prior to arrival: | |
| no charge - less than 2 weeks prior to arrival or no show: 1 | |
| week charged. Moving out before planned without 4-weeks- | |
| notice: 2 weeks charged. Giving 4-weeks-notice: no charge | |

Arrival/Departure: Saturday-Saturday

SUPPLEMENTS

| | |
|-----------------------------------------------------------------------------------------------|-----|
| Enrolment fee (non-refundable) | 200 |
| Accommodation placement (non-refundable) | 150 |
| Course materials per 12 weeks | 75 |
| High season (tuition) / week* | 25 |
| High season (homestay) / week* | 25 |
| High season (Vantaggio Suites) once* | 100 |
| Cleaning fee (Vantaggio Suites) | 45 |
| I-20 delivery fee for visa (Japan, Korea)** | 70 |
| I-20 delivery fee for visa (Western Europe, South-East Asia, China, Turkey & Latin America)** | 100 |
| I-20 delivery fee for visa (CIS, Eastern Europe, MENA)**140 | |

* High season: Tuition 25.06. – 17.08.2018 / Homestay 23.06. – 25.08.2018 / Vantaggio Suites July/August (stays of less than 10 days: no supplement; from 10-39 days: USD 50; from 40 days: USD 100)

** applicable for F-1 visas

EXAM FEES

| | |
|----------------|-----|
| Exam fee FCE | 350 |
| Exam fee CAE | 350 |
| Exam fee IELTS | 250 |
| Exam fee TOEFL | 200 |
| Exam fee TOEIC | 115 |

Exam fees are only approximate and to be paid on-site

PRIVATE LESSONS

| | | |
|------------|------------|-----|
| One-to-one | per lesson | 105 |
|------------|------------|-----|

TRANSFER (ONE WAY)

| | |
|---------------------------------|-----|
| San Diego International Airport | 110 |
|---------------------------------|-----|

WEEKLY START DATES

| J | F | M | A | M | J | J | A | S | O | N | D |
|----|----|----|----|----|----|----|----|----|----|----|----|
| 2 | 5 | 5 | 2 | 7 | 4 | 2 | 6 | 4 | 1 | 5 | 3 |
| 8 | 12 | 12 | 9 | 14 | 11 | 9 | 13 | 10 | 8 | 13 | 10 |
| 16 | 20 | 19 | 16 | 21 | 18 | 16 | 20 | 17 | 15 | 19 | 17 |
| 22 | 26 | 26 | 23 | 29 | 25 | 23 | 27 | 24 | 22 | 26 | |
| 29 | | | 30 | | | 30 | | | 29 | | |

Start dates also for beginners (in bold)

See exam flyers for FCE / CAE dates

School is closed

01.01. / 15.01. / 19.02. / 23.03. / 28.05. / 15.06. / 04.07. / 03.09. / 21.09. / 12.11. / 22.11. / 23.11.; 24.12.2018 – 04.01.2019

2018

All prices and details may change without notice.