

FY 2025 Summer Program



Japanese Language School Education Center

GLOBAL SUMMER CAMPS
info@global-edu.com.mx

56 3333-3045



Agenda

- ❑ Why join the Summer Program
- ❑ Program Calendar
- ❑ Activities
- ❑ Students' Voices
- ❑ Fees
- ❑ Accommodation arrangement
- ❑ Airport transfer arrangement (Optional)
- ❑ Cancellation • Refund Policy
- ❑ Disclaimer of Warranty and Liability for Participation in the Program

Why join the Summer Program

- ◆ Original program combines Japanese language lessons with a variety of activities.
- ◆ Experienced and friendly staff for all your support needs!
- ◆ Learn in the heart of pop culture, Tokyo-Shibuya, where the latest trends in fashion, music, and culture are constantly emerging.

[TOKYO Fun!] Why join Summer Program?

1. Extensive Activities

Exciting activities with Study & Trip: We offer a program that combines the charm of Japan's 'Kawaii' culture, modern elements, and tradition. Explore popular sightseeing spots and engage in various experiences to make the most of your summer in Japan."

2. International exchange events with international students

This is a great opportunity to make friends from different countries! Let's make plenty of memories through diverse cultural experiences and international exchange meetings.

3. A new campus blends traditional Japanese elements with cutting-edge technology

The Shibuya Campus opened in 2023. The building is designed with the image of a traditional Japanese house and "ENGAWA" equipped with state-of-the-art facilities and utilizing IT. The Library corner with books selected by ISI staff is also a popular attraction.



LENGTH

Choose between 2 or 4-week programs. It's an ideal duration for those who want to immerse themselves in learning Japanese thoroughly during their stay in Japan.



SCHEDULE

Morning classes 8:50~12:00 (JST)
The afternoons are dedicated to activities or free time, ensuring a balanced schedule between organized activities and personal time.



AGE LIMIT FOR JOINING THE PROGRAM

Minimum age requirement: 15 years old
Various experiences organized in a safe environment.



LEVEL

Introduction-Beginner/Intermediate level
(CEFR : A1~B1)
*Please contact us if you are at an advanced level.

Why join the Summer Program

Why choose?

Special Short-Term Program focuses on developing communication skills in Japanese over a short period of time and exposes you to various aspects of Japanese culture.

You can improve your Japanese further by studying Japanese at a level that suits you best using the words you have learnt during your activities.

Make lots of memories with students from all over the world!

Many exciting experiences await you in Japan.

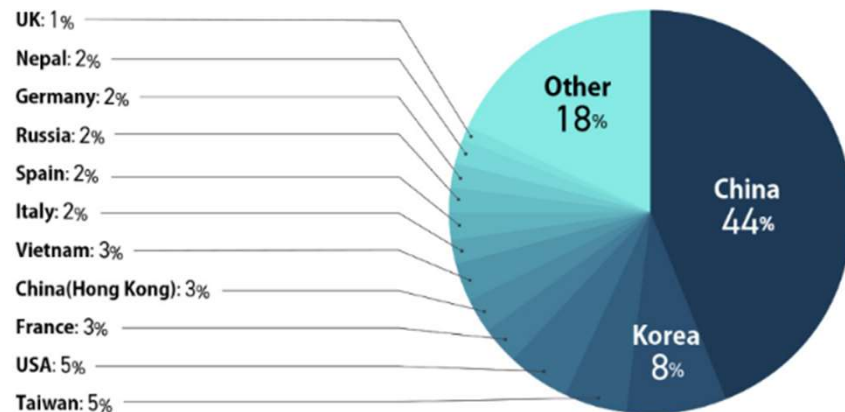
Learn to be diverse in a global learning environment

Japanese Language School has welcomed more than 34,000 students from more than 120 countries and regions around the world.

Students come from various countries. In this international learning environment, you will have a chance to not only learn Japanese language, but also to come in contact with foreign cultures and values that are different from your own country and Japan.

Nationality ratio (96 countries and regions)

(Cumulative results for the past three years)



Program Calendar

Course A : Jul 8th – Aug 2nd (4weeks)

	Sunday	Monday	Tuesday	Wednesday	Thursday	Friday	Saturday
	JULY 7	JULY 8	JULY 9	JULY 10	JULY 11	JULY 12	JULY 13
AM	Arrival	Orientation	Class	Class	Class	Class	Sightseeing in Asakusa, TOKYO SKYTREE
PM		Welcome Party, Sumo Experience	SHIBUYA SKY	Free Time	teamLab	Free Time	
	JULY 14	JULY 15	JULY 16	JULY 17	JULY 18	JULY 19	JULY 20
AM	Free Time	Free Time (Holiday)	Class	Class	Class	Class	Popular theme park
PM			Aqua Park Shinagawa	Free Time	University campus tour	Free Time	
	JULY 21	JULY 22	JULY 23	JULY 24	JULY 25	JULY 26	JULY 27
AM	Free Time	Class	Class	Class	Class	Class	Kamakura 1day Trip
PM		Free Time	Small Worlds TOKYO	Free Time	Visiting Odaiba Miraikan*	Free Time	
	JULY 28	JULY 29	JULY 30	JULY 31	AUGUST 1	AUGUST 2	AUGUST 3
AM	Free Time	Class	Class	Class	Class	Class	Departure
PM		Free Time	Sightseeing in Akihabara	Free Time	Free Time	Farewell Party	



*Depending on the arrangement situation, activities and event dates are subject to change without prior notice.

*The school will be closed on national holidays. (No classes or activities will be offered.)

*Please be sure to purchase overseas travel insurance.

*Activities may be canceled due to circumstances such as weather, unexpected disasters and traffic conditions.

*Miraikan: National Museum of Emerging Science and Innovation

Program Calendar

Course B : Jul 8th – Jul 20th (2weeks)

	Sunday	Monday	Tuesday	Wednesday	Thursday	Friday	Saturday
	JULY 7	JULY 8	JULY 9	JULY 10	JULY 11	JULY 12	JULY 13
AM	Arrival	Orientation	Class	Class	Class	Class	Sightseeing in Asakusa, TOKYO SKYTREE
PM		Welcome Party, Sumo Experience	SHIBUYA SKY	Free Time	teamLab	Free Time	
	JULY 14	JULY 15	JULY 16	JULY 17	JULY 18	JULY 19	JULY 20
AM	Free Time	Free Time (Holiday)	Class	Class	Class	Class	Popular theme park
PM			Aqua Park Shinagawa	Free Time	University campus tour	Free Time	
	JULY 21						
AM	Departure						
PM							



*Depending on the arrangement situation, activities and event dates are subject to change without prior notice.

*The school will be closed on national holidays. (No classes or activities will be offered.)

*Please be sure to purchase overseas travel insurance.

*Activities may be canceled due to circumstances such as weather, unexpected disasters and traffic conditions.

Program Calendar

Course C : Jul 22nd – Aug 2nd (2weeks)

	Sunday	Monday	Tuesday	Wednesday	Thursday	Friday	Saturday
	JULY 21	JULY 22	JULY 23	JULY 24	JULY 25	JULY 26	JULY 27
AM	Arrival	Orientation + Class	Class	Class	Class	Class	Kamakura 1day Trip
PM		Free Time	Small Worlds TOKYO	Free Time	Visiting Odaiba Miraikan*	Free Time	
	JULY 28	JULY 29	JULY 30	JULY 31	AUGUST 1	AUGUST 2	AUGUST 3
AM	Free Time	Class	Class	Class	Class	Class	Departure
PM		Free Time	Sightseeing in Akihabara	Free Time	Free Time	Farewell Party	

*Miraikan: National Museum of Emerging Science and Innovation

*Depending on the arrangement situation, activities and event dates are subject to change without prior notice.

*The school will be closed on national holidays. (No classes or activities will be offered.)

*Please be sure to purchase overseas travel insurance.

*Activities may be canceled due to circumstances such as weather, unexpected disasters and traffic conditions.



Activity week1 (Jul 8th – Jul 13th)



Sumo Experience

The beloved Japanese national sport, sumo wrestling. Former sumo wrestlers will visit the school, providing a rare and valuable experience to get a feel for depth of Japanese culture.

SHIBUYA SKY

Tokyo's new symbol, SHIBUYA SKY. From an open-air space approximately 230m above ground with nothing to obstruct the view, you can enjoy a panoramic 360-degree view of the bustling cityscape of Tokyo.

teamLab

A Japanese multisensory museum that blends art and technology. With art that changes based on people's movements, you're guaranteed to capture plenty of Instagram-worthy photos!

Sightseeing in Asakusa TOKYO SKYTREE

Experience the historical and cultural richness at traditional Asakusa Temple and Nakamise Street, and savor the modern side of the city at Tokyo Skytree. It's a unique opportunity to feel both tradition and the future of Tokyo at the same time.

Activity week2 (Jul 16th – Jul 20th)



Aqua Park Shinagawa

Experience the impressive dolphin show, the allure of giant aquariums, and a diverse ecosystem at this captivating aquarium. The use of lights and sounds in the presentation is astonishing, making it hard to believe it's just an aquarium.



University campus tour

Get a glimpse of the atmosphere of a Japanese university through a tour of university facilities. This is a particularly valuable opportunity for those considering future studies in Japan.



Popular theme park

The world's most famous theme park where dreams and magic come to life.

Enjoy the beautiful harborside ambiance, unique attractions, shows, and entertainment.

Activity week3 (Jul 23rd – Jul 27th)



Small Worlds TOKYO

A facility where you can enjoy Japanese culture, history, and global landscapes in miniature. The intricate models and displays crafted with precision and technology are truly worth a visit!



Visiting Odaiba Miraikan*

Observe the iconic Rainbow Bridge in Odaiba and explore future science and technology at the science museum. A wonderful experience awaits, seamlessly blending fun and learning.

*Miraikan: National Museum of Emerging Science and Innovation



Kamakura 1day Trip

Experience the overwhelming presence of the Great Buddha, savor the historical and sacred atmosphere at Tsurugaoka Hachimangu Shrine. Enjoy a leisurely stroll along the beautiful seaside at Enoshima.

Activity week4 (Jul 30th – Aug 2nd)



Sightseeing in Akihabara

The globally renowned hub of technology and otaku culture. Immerse yourself in the latest gadgets and anime goods in the electronics district, and savor the unique entertainment and charm of subculture that unfolds here.



Farewell Party

It's the final moments with the teachers and friends you've spent time with so far. Let's conclude the summer program by sharing the photos and videos we've each taken, reminiscing about the memories we've created together.

Students' Voices



With a great balance of class and tourism activities, delivers a one-of-a-kind experience. So many different countries are represented here that everyday you learn new things about people and the world. The experience lets you acquire a whole new perspective on life.

ARTHUR (USA)



.... was amazing! The teachers were fun, kind and genuinely passionate about teaching! I really enjoyed the activities! The school helped open my eyes to Japan! I loved the trip to Kyoto, around Mt. Fuji and Akihabara and the sushi-making activity. I feel I made a lot of progress with my Japanese studies, was an experience in Japan which I will never forget! ありがとう!

KAILEY (Canada)



The summer course was a really good experience! Not only did I study Japanese, I also learnt a lot about Japanese culture. I came to the Summer Course alone but I am leaving with many international friends from all over the world. The teachers are all really kind and helped us out so much. This was an experience that I will never forget.

LILIA (Mexico)



We had many great teachers, and it was fun to learn! I made many new friends from all over the world, from America, Holland, Thailand and many others! The activities let me see more of Japanese culture and took me to places that I would not have gone if I had not been on this course! I made a lot of good memories on the summer course!

SIMON (Sweden)

* Courses are subject to change every year.

Fees

Program Fees (valid until October 30, 2024)

Prices in JPY

Course	Starting date	Course period	Duration	Stay Set Plan (Accommodation included)				Program only
				Homestay	Weekly Mansion	Hotel (Twin)	Hotel (Single)	
A	July 8 th	Jul. 8 th - Aug. 2 nd	4 weeks	516,600	543,600	630,000	900,000	330,000
B	July 8 th	Jul. 8 th - Jul. 20 th	2 weeks	361,200	375,200	420,000	560,000	250,000
C	July 22 nd	Jul. 22 nd - Aug. 2 nd	2 weeks	305,400	318,400	360,000	490,000	200,000

Included in program fee:

- Admission fees, tuition fees, material fees, and facility fees
- Extracurricular activities, admission tickets, transportation during extracurricular activities
- Accommodation fees for the following dates (stay set plan only)

Course	Check-in	Check-out	Duration
A	July 7 th	August 3 rd	27 nights 28 days
B	July 7 th	July 21 st	14 nights 15 days
C	July 21 st	August 3 rd	13 nights 14 days

*Please contact us if you wish to stay additional nights.

NOT included in the program fee:

- Airline tickets
- Overseas travel insurance
(Please make sure to have insurance coverage when coming to Japan)
- Accommodation fees (excluding the Stay Set Plan).
- Airport transportation fees
- Foods and drinks other than those provided in the program
- Transportation costs from the place of stay to the school.
- Activities done during your free time (entrance and transportation fees are at your own expense)
- Invitation letter fee (for those who need an invitation document from our school for a Temporary Visitor Visa (Tourist Visa) application).
*There are certain conditions for the invitation letters.
Please contact us for more information.

Accommodation arrangement

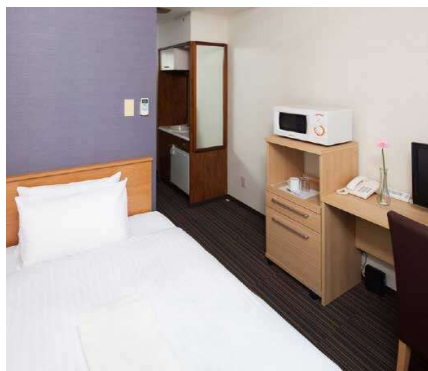
- ◆ Please note that the deadline for applications to Homestay and Weekly Mansion is April 15th.
- ◆ We may not be able to offer you a homestay due to lack of availability. As soon as the homestay is fully booked, we will announce it.
- ◆ A transfer representative will meet you at the arrival gate. (Refer to the next page for more details.)

① Homestay



- Learning Japanese customs and lifestyle while learning Japanese.
- Breakfast and dinner provided
- Commuting time: Approximately 60-90 minutes by public transportation
- Additional fee : 5,800JPY/night
- ***Application deadline : April 15th**

② Weekly Mansion



- Furnished with home appliances. Bedding is also included
- Each room has a mini-kitchen, bath, and toilet
- Commuting time: Approximately 20-40 minutes by public transportation
- Additional fee : 6,800JPY/night
- ***Application deadline : April 15th**

③ Hotel



- We will arrange a hotel as close to the school as possible
- Each room has a mini-kitchen, bath, and toilet
- Commuting time: Approximately 10-40 minutes by public transportation
- Additional fee :
 - Twin room 10,000JPY/night
 - Single room 20,000JPY/night
- *Twin room can only be arranged when two people apply at the same time.

Airport transfer arrangement (Optional)

- ◆ Pick-up and drop-off arrangements will be made only after payment has been confirmed.
- ◆ Pick-up arrangements are available only for those whose flights arrive between 8:00 and 18:00.(for weekly mansion 8:00 and 15:00)
- ◆ Please inform us of your flight information (arrival date, time, and flight number) at least 1 month prior to your arrival date. (Please submit your e-ticket).
- ◆ A transfer representative will meet you at the arrival gate, but you may have to wait at the airport for a certain amount of time.
- ◆ If your flight changes, please contact us at least one week prior to arrival. Please note that we may not be able to make arrangements and no refunds will be made if we are notified after that time.

Destination	One-way Price	Method	Additional Information
Homestay	32,000 JPY	Car	Please note that only an outbound service is provided, not a return service.
Weekly Mansion	31,000 JPY	Taxi	—
Hotel	31,000 JPY	Car	—

Check-in time / Flight arrival time

Nearest Airport	Accommodation Type	Check-in time	Flight Arrival Time
Narita Airport or Haneda Airport	Homestay	14:00-20:00	8:00-18:00
	Weekly Mansion	14:00-18:00	8:00-15:00
	Hotel	15:00-20:00	8:00-18:00

Cancellation · Refund Policy

- ◆ Only refund requests made in writing are accepted. (Email, documents etc. Refund made over phone call etc. are not accepted)
The date of cancellation is the date of receipt of the Email, documents etc.
- ◆ Please note that you will be responsible for the bank transfer fee at the time of refund.
- ◆ Within 40 days after receipt of the cancellation application, the amount after deducting the following cancellation fees will be refunded.
(In case of cancellation without payment by the due date, the following cancellation fee will be charged).
- ◆ We will provide a refund within 40 days after the cancellation process is made.
- ◆ Please note that we will not refund the invitation letter fee (12,000 JPY) regardless of the reason.
- ◆ In case of temporary visitor visa not granted, please contact us at least 2 weeks before the program starts. In this case we will refund the amount after deducting the refund charge (6,000 JPY) after confirmation of visa denial.

1. Program fees

Prices in JPY

Cancellation date in comparison to the program start date		Before the course start date				After the date of admission
		At least 2 months prior	More than 4 weeks but less than 2 months	More than 2weeks but less than 4 weeks	Less than 2 weeks	
Cancellation Charge Amount	Course A	61,000	112,000	220,000	226,000	No refund
	Course B	46,000	79,000	148,000	148,000	No refund
	Course C	41,000	59,000	110,000	115,000	No refund

Other important matters

- ◆ If you are unable to travel abroad after applying for the program, please contact us.
- ◆ After entering the country, please follow the Japanese Government's policies for prevention of infection.
- ◆ Please note that activities and school fees that cannot be attended during the quarantine period cannot be refunded.
- ◆ Please read the agreement and disclaimer for program participation on the next page before registering.

Cancellation · Refund Policy

2. Accommodation fees

- In case of cancellation within the following period, even if you have not paid in full, you will be required to pay the entrance fee and cancellation fee separately.
- No refunds will be made for cancellations after entering the accommodation. The same cancellation policy applies to those who extend their stay.
- In the event that you change your enrollment date, the accommodation fees that have already been paid cannot be used for the new period of stay, the accommodation fees will be in part returned according the refund Policy below.

Cancellation Date	In case of cancellation				In case of change of tenancy period after application is confirmed		In case of visa denial
	From the day after the application deadline to at least 4 weeks before the scheduled move-in date.	At least 4 weeks to 2 weeks prior to the scheduled move-in date.	At least 2 weeks to 1 week prior to the scheduled move-in date.	Less than 1 week from the scheduled move-in date.	More than 4 weeks prior to the scheduled move-in date.	Less than 4 weeks from the scheduled move-in date.	
Entrance fee	No refunds	No refunds	No refunds	No refunds	-	-	-
Dormitory fees (rent, facilities, cleaning fees)	100% refund	First month (4 weeks) 70% of dormitory fee minus the remainder refunded	Refund the remainder after deducting one month (4 weeks) dormitory fee	No refunds	The difference will be refunded	No refund in case of difference	100% refund
Cancellation Fee	6,000 JPY	6,000 JPY	6,000 JPY	-	6,000 JPY	-	-
Notes	-	-	No refund if the application period is less than one month.	-	If additional accommodation fees are incurred due to a longer period of time after the change, they will be invoiced separately.		Confirmation of visa denial

3. Airport transfer fees

- If you cancel within the following period, even if you have not paid in full by the payment due date after the invoice from the school has been sent, you will be charged a separate cancellation fee.
- In the event that you change your arrival date, the transfer fees that have already been paid cannot be used for the new transfer date, the transfer fees will be in part returned according the refund Policy below

Cancellation Date	In case of cancellation		In case of change of pick-up and drop-off dates and times	In case of visa denial
	More than 2 weeks prior to scheduled arrival date	Within 2 weeks of the arrival date		
Airport pick-up fee	100% refund	No refunds	No refunds	100% refund
Cancellation Fee	3,000 JPY*	-	-	-
Notes	-		Please make a new application with a new arrival date and time. Additional fees will be charged separately.	Confirmation of visa denial

- If the pick-up and drop-off times are changed on the day of the pick-up due to a missed ride or other reasons due to carelessness on the part of the applicant, a new application will be made.
- In the case of changes or cancellations of transportation requests due to strikes or airline circumstances, if a car has already been dispatched, it will be treated as a new application, so we recommend that you purchase insurance for overseas students.

* If the cancellation is made at the same time as the cancellation of the accommodation arrangement, a cancellation fee of 6,000 JPY will be charged for the cancellation of the accommodation arrangement, and the cancellation fee related to transportation will be waived.

Disclaimer of Warranty and Liability for Participation in the Program

The following disclaimer is provided for your information. While we will do our utmost to ensure your safety and security during this program, we ask for your understanding of these disclaimers. Please note that you must agree to the following before you apply to participate in this program. By applying for this program, you are deemed to have agreed to the following items.

Disclaimer

The school will not be liable for any damages incurred by the customer due to any of the following reasons. In addition, the school will not refund the school fees or program fees for any cancellations or absences due to any of the following reasons:

- Damages incurred due to the intention or negligence of the student or a third party.
- Changes in schedule or cancellation of events due to natural disasters, weather conditions, outbreaks or spread of infectious diseases, pandemics of new types and seasonal influenza, or other unforeseen disasters, riots, war, or other causes.
- Cancellation of the school in the event that the school deems the situation to be dangerous and of great social impact, such as requests from the government or prefectural government to refrain from activities, or the issuance of a state of emergency declaration, etc.
- Accident or fire of transportation or accommodation facilities, or change of itinerary or cancellation of implementation due to such accident or fire.
- Quarantine by order of government authorities or due to contagious diseases, accidents during free activities, food poisoning, theft, forgotten items
- Delays in transportation, strikes, disconnections, schedule changes caused by any of these, or cancellations.
- Non-participation in activities due to delays in meeting or departure locations.
- Measures necessary to ensure the safety of your life or physical health, or other reasons that the school cannot manage, schedule changes caused by any of these, or cancellations.
- If you are unable to enter Japan due to government immigration restrictions, etc.
- If you are unable to re-enter Japan when you return to Japan temporarily at your own discretion
- If you are absent from classes/activities due to your individual risk management, safety measures, health and other considerations.

Upon your participation

- Do not participate if you have a fever or other symptoms on the day of the event.
- When attending school or participating in activities, please follow all infection control measures as instructed by the school and the activity sites.

Application for contract (special measures)

- 1) If you have a physical disability, 2) a health hazard, 3) a pregnant person, 4) any other person who needs special consideration, please inform us where possible.
- Based on the request from students, the cost of special measures taken by the school for the customer will be covered by the student.
 - If our school determines that you are in need of a doctor's diagnosis or medical treatment due to illness or other reasons while studying abroad, we will take necessary measures. Any costs associated with this will be covered by the student.

Student Responsibilities

- If our school suffers damage due to your intention or negligence, you must compensate for the damage.
- If an accident occurs while studying abroad, please contact us immediately. (If there is a situation where you can not contact, please contact us as soon as the opportunity arises)
- If you have any pre-existing medical conditions, are receiving medical treatment or medication, or have allergies or urticaria, please contact us in advance. We will not be responsible for any situation that may arise.
- Please keep your valuables with you and take responsibility for them to prevent theft. We will not be responsible for any theft or loss.

Travel Costs

- The program fee includes tuition, entrance fees to tourist attractions indicated in the itinerary and transport from the school to the attractions.
- Program fees are not included in the program price, which include airline tickets(including airport fees, fuel surcharges, etc.), accommodation(except set plans), round-trip airport transfers, travel expenses from your accommodation to school, travel insurance, and
- food expenses (excluding meal activities). (Entrance fees and transportation costs for free participation activities will be covered by the student.)
- Any additional costs, like extra food or drinks, for personal usage or due to personal reasons will be covered by the students.
- We strongly recommend that you take out overseas travel insurance in case of illness, injury or accident while studying abroad.

Privacy Policy/The use of personal information

Purpose of using customer information: We will use the personal information provided at the time of inquiries and application for program to communicate with customers, as well as transport and accommodation in the programs you have applied for. We will use it within the scope necessary for the arrangement of services provided by institutions and the procedures for receiving such services.

Activities may be cancelled due to weather, unforeseen disasters, traffic conditions, outbreaks or spread of infectious diseases, or other reasons beyond our control. No compensation will be provided for any expenses incurred due to these reasons.

Disclaimer of Warranty and Liability for Participation in the Program

Guidelines for responding to infection

The school will respond to infection according to the following guidelines. The school will not be held responsible for any client who is unable to receive the scheduled services due to the following guidelines. Also, no refunds will be made for program changes due to the following reasons.

Extracurricular activities (transportation, facilities used, etc.)

- We will inform the customer to confirm that the service provider arranging the service is one that has appropriate infection prevention measures in place.
 - Consider providing information, etc., as necessary so that customers can recognize and select whether safety measures are taken by the operator of the transportation facility, etc. to be arranged.
- (1) Planning of activities
 - Pay attention to the selection of appropriate activity sites according to the infection situation.
 - Verify that the prefecture in which the activity is held has not requested voluntary restraint from moving between prefectures.
 - (2) Selection of service providers, etc. for activities
 - Ensure that appropriate infection control measures are taken prior to incorporating transportation, meal sites, tourist facilities, experience programs, etc. into activities.
 - (3) Activity implementation decision
 - In case the safe and smooth execution of an activity becomes difficult or is likely to become difficult due to changes in the infection situation, etc., the activity shall be terminated.
 - Even after an activity has begun, if it becomes clear that a change in the infection situation is likely to make it difficult to continue the activity safely, the activity will be terminated and the participants will be returned to the place of departure.
 - (4) Activity management outside the school
 - The operation and management will ensure that each guidelines of each transportation system used in the activity, facilities and sightseeing sites are followed.

Meals

- In terms of meals, the operation and management will ensure that each location's guidelines are followed.

Health care of activity participants, staff and related personnel

- Before the start of an activity, we will check the physical condition of the participants (temperature and physical condition check), and ask those who present symptoms of fever or suspected infection to refrain from participating in the activity.
- Customers who become ill during an activity should leave the activity, take measures to prevent infection from spreading to other participants, and prepare in advance to consult and receive medical care at the nearest health center or medical institution.
- We will arrange services as needed for activity participants who leave the group because they become ill to return to the place where the activity began or to their accommodations, etc.

This guide is written in Japanese originally, (the Japanese version is the original copy), and the English version is translated for reference only. If there is a contradiction between these two language versions, the Japanese version will take precedence.